


RNAV (GPS) RWY 23

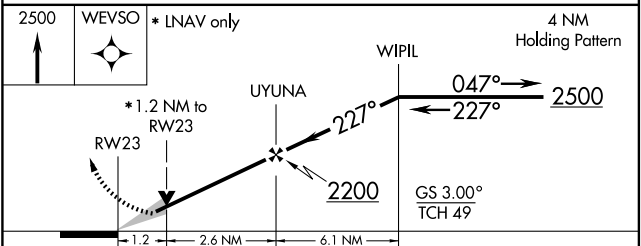
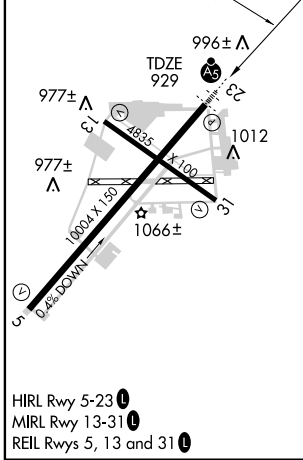
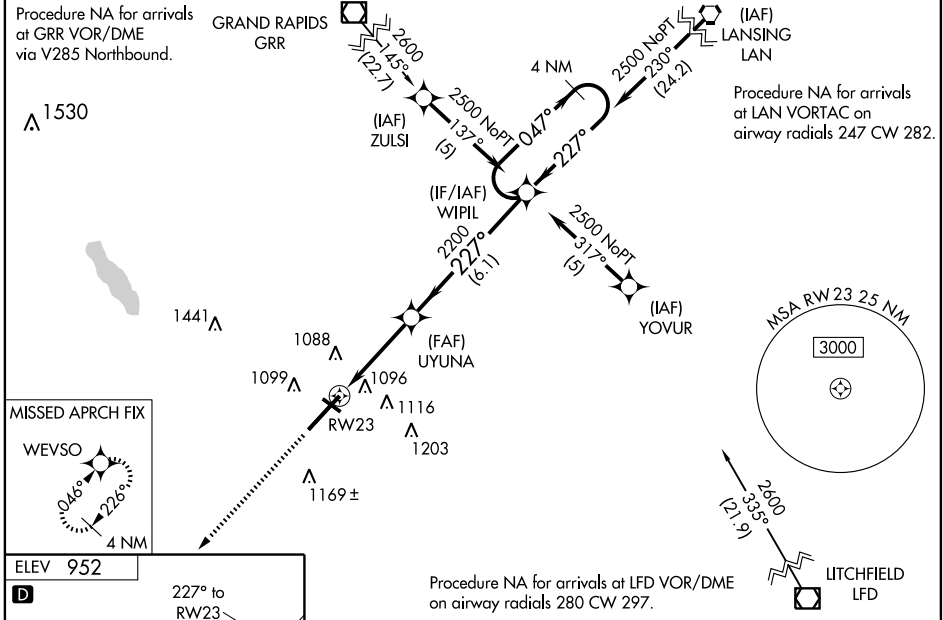
BATTLE CREEK / W.K. KELLOGG (BTL)

WAAS CH 56411 W23A	APP CRS 227°	Rwy Idg 10003 TDZE 929 Apt Elev 952
---------------------------------	------------------------	--

▽ For inoperative MALS, increase LPV all Cats visibility to RVR 5000. For inoperative MALS when using Grand Rapids altimeter setting, increase LPV all Cats visibility to RVR 6000.
△ ASR For uncompensated Baro-VNAV systems, LNAV/VNAV NA below -16°C (4°F) or above 46°C (114°F). DME/DME RNP-0.3 NA. When local altimeter setting not received, use Grand Rapids altimeter setting and increase all DA 107 feet, and all MDA 120 feet. Increase LPV visibility all Cats to RVR 4000, LNAV/VNAV all Cats visibility to 1 1/2 miles, and LNAV Cat C to RVR 5000, Cat D to RVR 6000. Increase Circling visibility Cats C/D 1/4 mile. VDP and Baro-VNAV NA when using Grand Rapids altimeter setting.

MALS

MISSED APPROACH:
 Climb to 2500 direct WEVSO and hold.

ATIS 128.325	KALAMAZOO APP CON * 119.2 340.9	BATTLE CREEK TOWER * 126.825 239.025	GND CON 121.7 256.875	UNICOM 122.95	CTAF 126.825 0
------------------------	---	---	---------------------------------	-------------------------	--------------------------



CATEGORY	A	B	C	D
LPV DA		1210/24	281 (300-1/2)	
LNAV/VNAV DA		1419/60	490 (500-1 1/4)	
LNAV MDA	1360/24	431 (500-1/2)	1360/40 431 (500-3/4)	1360/50 431 (500-1)
CIRCLING	1400-1 448 (500-1)	1500-1 548 (600-1)	1500-1 1/2 548 (600-1 1/2)	1520-2 568 (600-2)

EC-1, 22 OCT 2009 to 19 NOV 2009

EC-1, 22 OCT 2009 to 19 NOV 2009