

NDB RWY 23

BATTLE CREEK / W.K. KELLOGG (BTL)

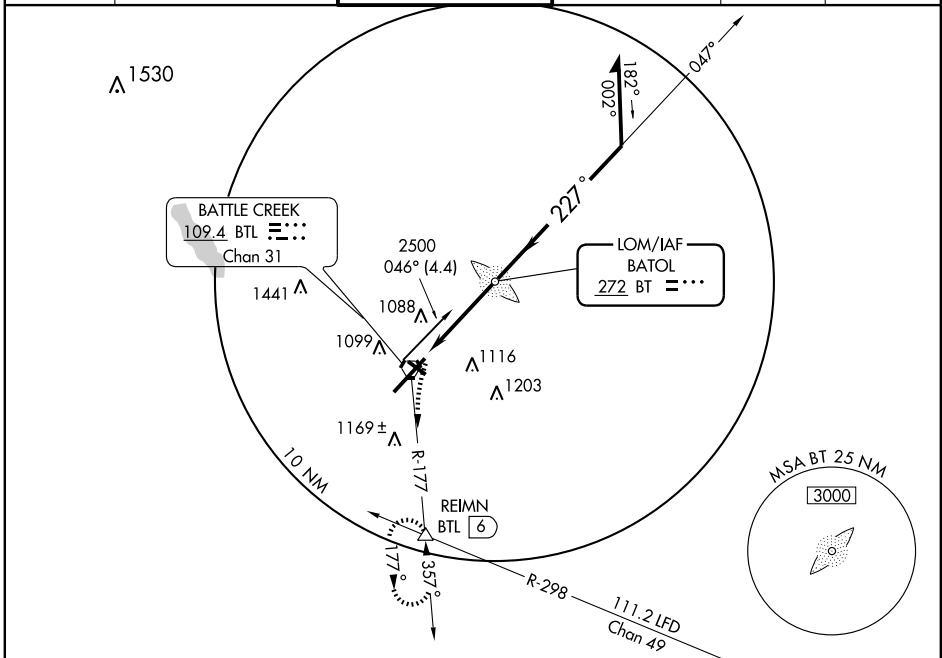
LOM BT	APP CRS	Rwy Idg	10003
272	227°	TDZE	929
		Apt Elev	952

When control tower closed, except for operators with approved weather reporting service, use Grand Rapids altimeter setting.

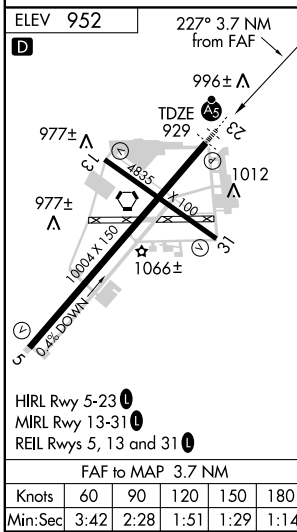


MISSED APPROACH: Climbing left turn to 3000 via BTL R-177 to REIMN Int/BTL 6 DME and hold.

ATIS	KALAMAZOO APP CON *	BATTLE CREEK TOWER *	GND CON	UNICOM	CTAF
128.325	119.2 340.9	126.825 239.025	121.7 256.875	122.95	126.825 0



EC-1, 22 OCT 2009 to 19 NOV 2009



CATEGORY	A	B	C	D
S-23	1440/40	511 (500-¾)	1440/50 511 (500-1)	1440/60 511 (500-1¼)
CIRCLING	1440-1	488 (500-1)	1480-1½ 528 (600-1½)	1520-2 568 (600-2)
GRAND RAPIDS ALTIMETER SETTING MINIMUMS				
S-23	1600-¾	671 (700-¾)	1600-1½ 671 (700-1½)	1600-2 671 (700-2)
CIRCLING	1600-1	648 (700-1)	1640-2 688 (700-2)	1680-2¼ 728 (800-2¼)