

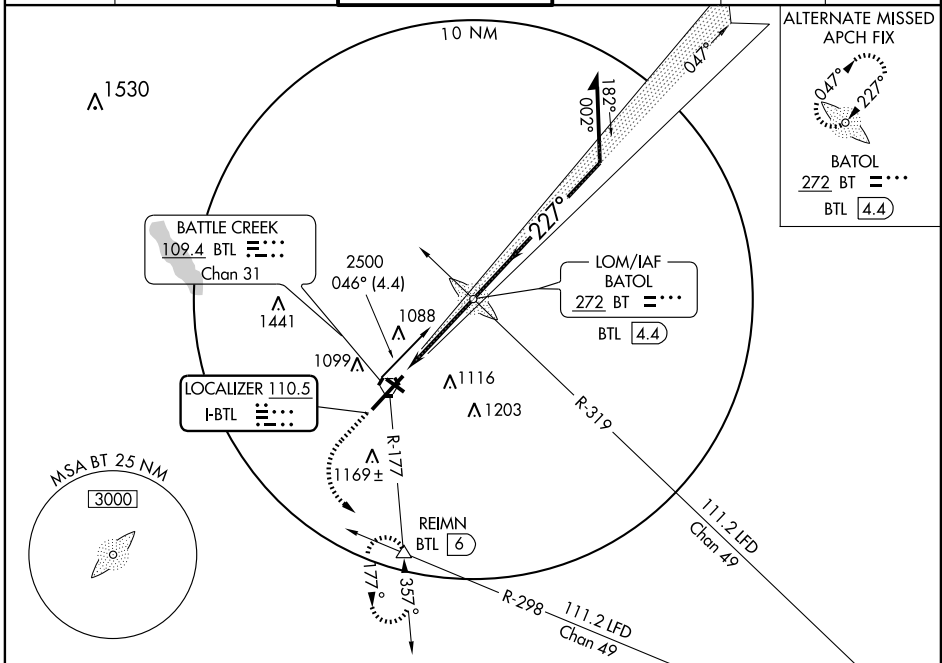
LOC I-BTL 110.5	APP CRS 227°	Rwy Idg 10003 TDZE 929 Apt Elev 952
---------------------------	------------------------	--

ILS or LOC RWY 23
BATTLE CREEK / W.K. KELLOGG (BTL)

⚠ When control tower closed, except for operators with approved weather reporting service, use Grand Rapids altimeter setting.
⚠ * RVR 1800 authorized with the use of FD or AP or HUD to DA.

MALSR MISSED APPROACH: Climb to 1400 then climbing left turn to 3000 via BTL R-177 to REIMN Int/BTL 6 DME and hold.

ATIS 128.325	KALAMAZOO APP CON * 119.2 340.9	BATTLE CREEK TOWER * 126.825 239.025	GND CON 121.7 256.875	UNICOM 122.95	CTAF 126.825 ⓪
------------------------	---	--	---------------------------------	-------------------------	---------------------------------



EC-1, 22 OCT 2009 to 19 NOV 2009

EC-1, 22 OCT 2009 to 19 NOV 2009

ELEV 952	227° 3.7 NM from FAF	1400	3000	REIMN	BATOL LOM/INT BTL 4.4	Remain within 10 NM
D						
HIRL Rwy 5-23 ⓪	MIRL Rwy 13-31 ⓪					
REIL Rlys 5, 13 and 31 ⓪	FAF to MAP 3.7 NM					
Knots	60	90	120	150	180	
Min:Sec	3:42	2:28	1:51	1:29	1:14	
CATEGORY	A	B	C	D		
S-ILS 23		* 1129/24	200 (200-½)			
S-LOC 23	1340/24	411 (400-½)	1340/40	411 (400-¾)		
CIRCLING	1420-1 468 (500-1)	1440-1 488 (500-1)	1480-1½ 528 (600-1½)	1520-2 568 (600-2)		
GRAND RAPIDS ALTIMETER SETTING MINIMUMS						
S-ILS 23	1289-¾		360 (400-¾)			
S-LOC 23	1500-¾	571 (600-¾)	571 (600-1)	1500-1¼ 571 (600-1¼)		
CIRCLING	1580-1 628 (700-1)	1600-1 648 (700-1)	1640-2 688 (700-2)	1680-2¼ 728 (800-2¼)		