

BATON ROUGE, LOUISIANA

AL-40 (FAA)

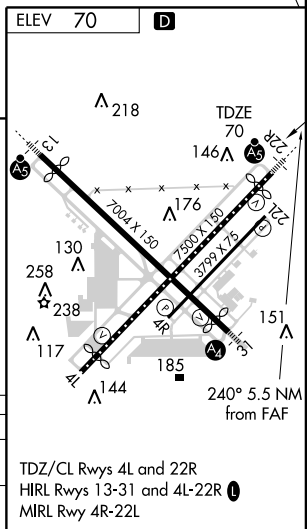
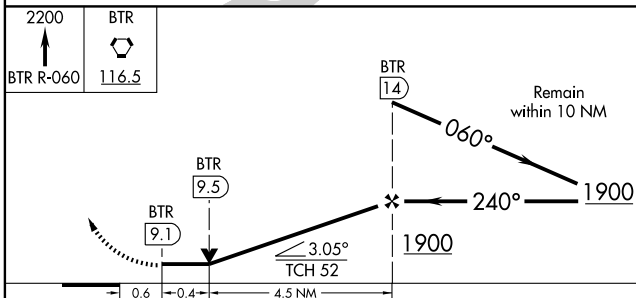
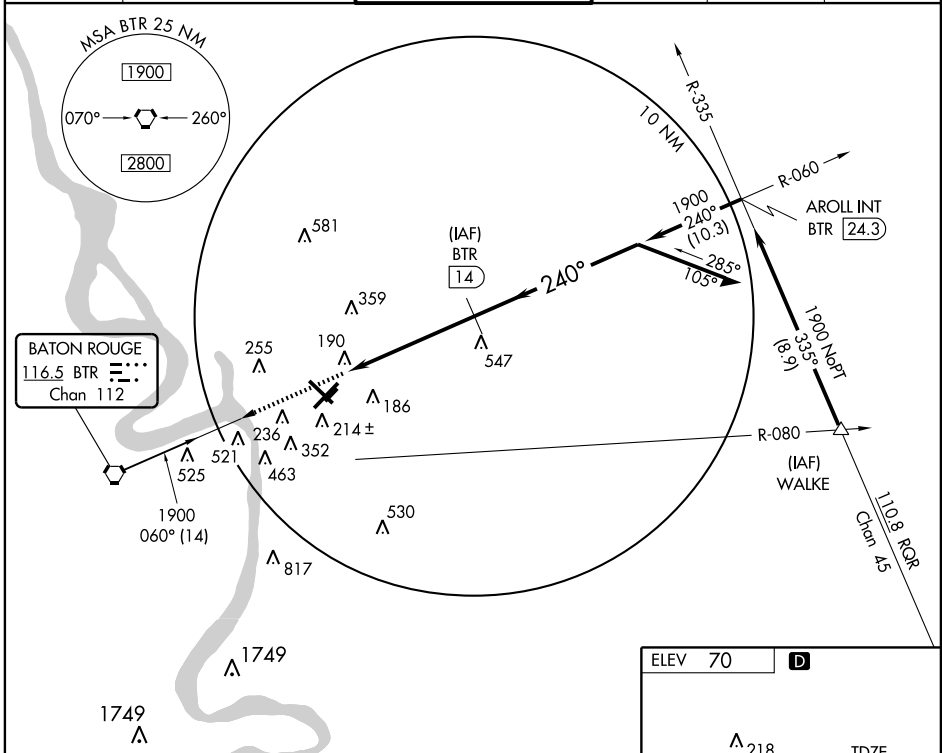
VORTAC BTR 116.5 Chan 112	APP CRS 240°	Rwy Idg 7076 TDZE 70 Apt Elev 70
---	------------------------	---

VOR/DME RWY 22R

BATON ROUGE METROPOLITAN, RYAN FIELD (BTR)

ASR	When VGSI inoperative, circling to Rwy 4L NA at night. Inoperative table does not apply.	MALS	MISSED APPROACH: Climb to 2200 via BTR R-060 to BTR VORTAC.
------------	---	-------------	--

ATIS 125.2	BATON ROUGE APP CON * 120.3 278.3	RYAN TOWER * 118.45 (CTAF) 0 257.8	GND CON 121.9	CLNC DEL 119.4	UNICOM 122.95
----------------------	---	--	-------------------------	--------------------------	-------------------------



CATEGORY	A	B	C	D
S-22R	480/50 410 (500-1)		480/60 410 (500-1½)	
CIRCLING	560-1 490 (500-1)		660-1½ 610 (700-2)	680-2

BATON ROUGE, LOUISIANA
Amdt 8F 08325

BATON ROUGE METROPOLITAN, RYAN FIELD (BTR)
30° 32' N-91° 09' W

VOR/DME RWY 22R

SC-4, 22 OCT 2009 to 19 NOV 2009

SC-4, 22 OCT 2009 to 19 NOV 2009