


RNAV (GPS) RWY 22R

BATON ROUGE METROPOLITAN, RYAN FIELD (BTR)

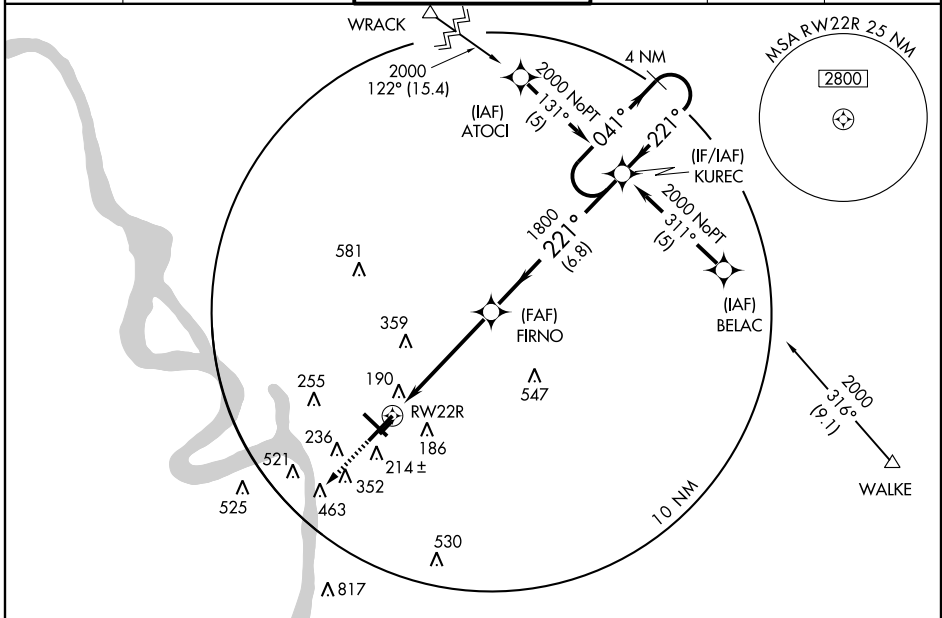
| | | |
|--|------------------------|---|
| WAAS Ch 86225 W22A | APP CRS 221° | Rwy Idg 7076 TDZE 70 Apt Elev 70 |
|--|------------------------|---|

▼ DME/DME RNP-0.3 NA. Baro-VNAV NA below -15°C (5°F). If local altimeter not received, use Hammond Northshore Rgnl altimeter setting and increase all DAs/MDAs 100 feet. For inoperative MALSR increase LPV visibility to RVR 5000 all CATs. Baro-VNAV and VDP NA when using Hammond Northshore Rgnl altimeter setting. When VGSI inoperative, circling Rwy 4L NA at night.

MALSR
AS 

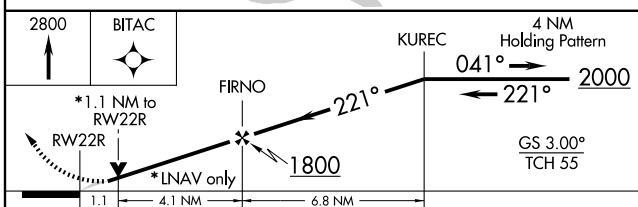
MISSED APPROACH:
Climb to 2800 direct BITAC and hold.

| | | | | | |
|----------------------|---|--|-------------------------|--------------------------|-------------------------|
| ATIS 125.2 | BATON ROUGE APP CON * 120.3 278.3 | RYAN TOWER * 118.45 (CTAF) 0 257.8 | GND CON 121.9 | CLNC DEL 119.4 | UNICOM 122.95 |
|----------------------|---|--|-------------------------|--------------------------|-------------------------|

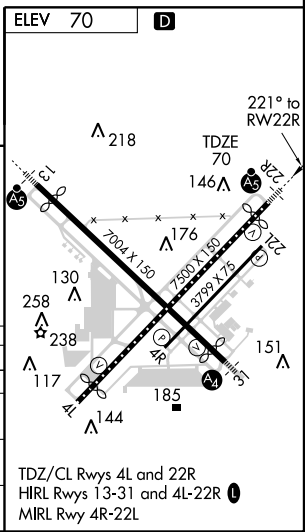


SC-4, 22 OCT 2009 to 19 NOV 2009

SC-4, 22 OCT 2009 to 19 NOV 2009



| CATEGORY | A | B | C | D |
|--------------|--------|--------------|------------------------|-----------------------|
| LPV DA | | 384/24 | 314 (400-½) | |
| LNAV/VNAV DA | | 529/50 | 459 (500-1) | |
| LNAV MDA | 480/24 | 410 (500-½) | 480/40 410 (500-¾) | 480/50 410 (500-1) |
| CIRCLING | 560-1½ | 490 (500-1½) | 660-1½ 590 (600-1½) | 680-2 610 (700-2) |



TDZ/Cl Rwys 4L and 22R
HIRL Rwys 13-31 and 4L-22R
MIRL Rwy 4R-22L