


BATON ROUGE, LOUISIANA

AL-40 (FAA)

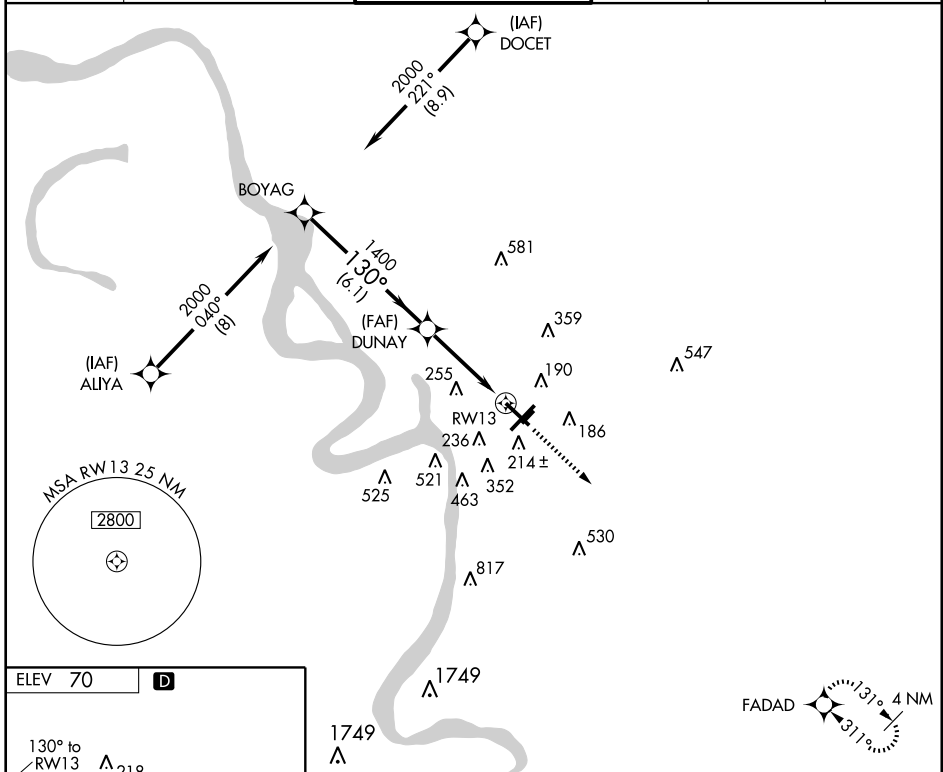
RNAV (GPS) RWY 13

BATON ROUGE METROPOLITAN, RYAN FIELD (BTR)

APP CRS	Rwy Idg	6407
130°	TDZE	67
	Apt Elev	70

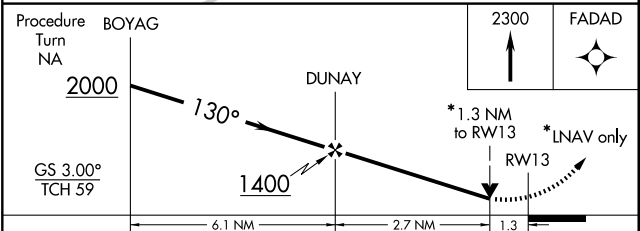
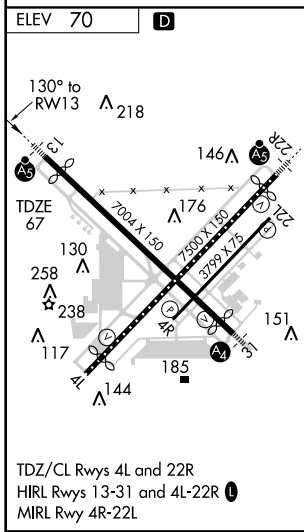
<p>▽ DME/DME RNP-0.3 NA. Baro-VNAV NA below -15°C (5°F). △ NA When VGSI inoperative, circling to Rwy 4L NA at night. ASR Inoperative MALS, increase LNAV Cat A and B visibility to RVR 5000.</p>	<p>MALS </p>	<p>MISSED APPROACH: Climb to 2300 direct FADAD and hold.</p>
---	---	---

ATIS 125.2	BATON ROUGE APP CON * 120.3 278.3	RYAN TOWER * 118.45 (CTAF) 0 257.8	GND CON 121.9	CLNC DEL 119.4	UNICOM 122.95
-----------------------------	--	---	--------------------------------	---------------------------------	--------------------------------



SC-4, 22 OCT 2009 to 19 NOV 2009

SC-4, 22 OCT 2009 to 19 NOV 2009



CATEGORY	A	B	C	D
GLS PA DA	NA			
LNAV/VNAV DA	540/50		473 (500-1)	
LNAV MDA	540/40		473 (500-¾)	
CIRCLING	560-1½		490 (500-1½)	
			660-1½	
			590 (600-1½)	
			680-2	
			610 (700-2)	

BATON ROUGE, LOUISIANA
 Orig-A 08325

BATON ROUGE METROPOLITAN, RYAN FIELD (BTR)
 30° 32' N-91° 09' W
RNAV (GPS) RWY 13