

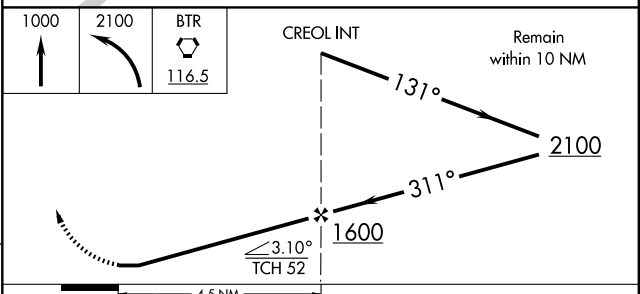
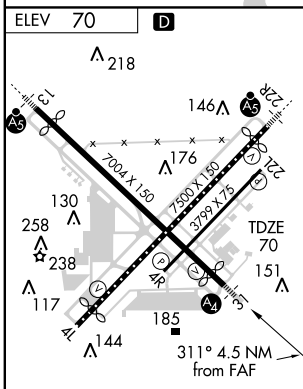
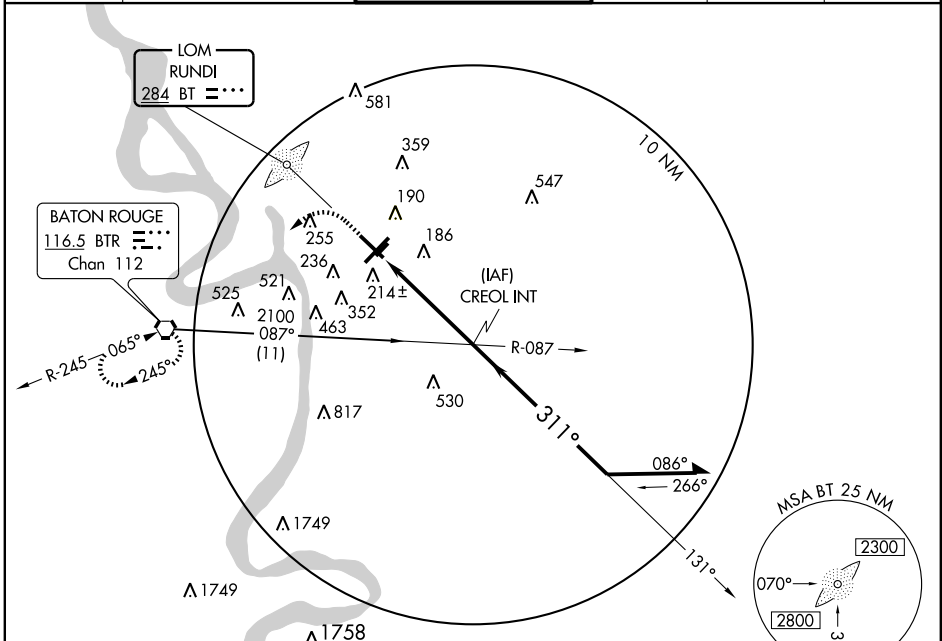
NDB RWY 31

BATON ROUGE METROPOLITAN, RYAN FIELD (BTR)

LOM BT 284	APP CRS 311°	Rwy Idg TDZE Apt Elev	6689 70 70
----------------------	------------------------	-----------------------------	---------------------------------------

<p>▼ Inoperative table does not apply to Cats B and C. When VGSI inoperative, circling to Rwy 4L NA at night.</p> <p>▲ ASR</p>	<p>MALS</p> <p>42 </p>	<p>MISSED APPROACH: Climb to 1000 then climbing left turn to 2100 direct BTR VORTAC and hold.</p>
--	-------------------------------	---

ATIS 125.2	BATON ROUGE APP CON * 120.3 278.3	RYAN TOWER * 118.45 (CTAF) 0 257.8	GND CON 121.9	CLNC DEL 119.4	UNICOM 122.95
----------------------	---	--	-------------------------	--------------------------	-------------------------



TDZ/CL Rwy 4L and 22R
HIRL Rwy 13-31 and 4L-22R
MIRL Rwy 4R-22L

FAF to MAP 4.5 NM

Knots	60	90	120	150	180
Min:Sec	4:30	3:00	2:15	1:48	1:30

CATEGORY	A	B	C	D
S-31	880-3/4 810 (900-3/4)	880-1 1/4 810 (900-1 1/4)	880-2 1/2 810 (900-2 1/2)	880-2 3/4 810 (900-2 3/4)
CIRCLING	880-1 810 (900-1)	880-1 1/4 810 (900-1 1/4)	880-2 1/2 810 (900-2 1/2)	880-2 3/4 810 (900-2 3/4)

NDB RWY 31

SC-4, 22 OCT 2009 to 19 NOV 2009

SC-4, 22 OCT 2009 to 19 NOV 2009