

BANGOR, MAINE

AL-39 (FAA)

VOR/DME RWY 15

BANGOR INTL (BGR)

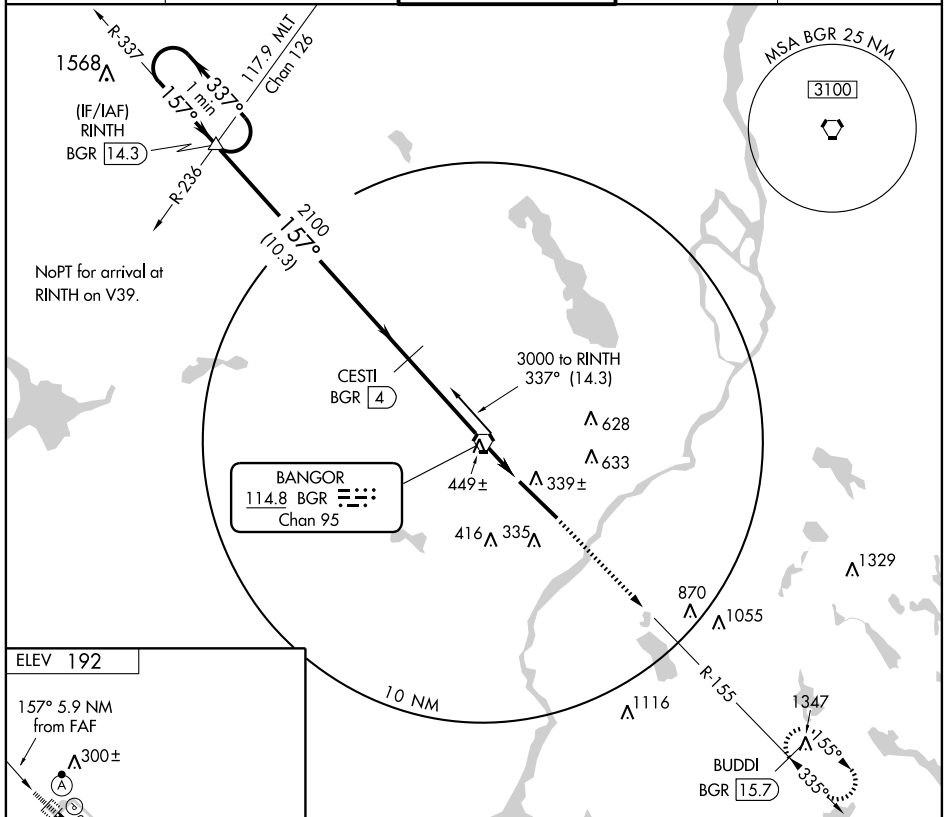
VORTAC BGR 114.8	APP CRS 157°	Rwy Idg 11440
Chan 95		TDZE 192
		Apt Elev 192

ASR For inoperative SSALR, increase S-15 Cat E visibility to 1 3/4 .
Circling NA NE of Rwy 15-33.

ALSF-2

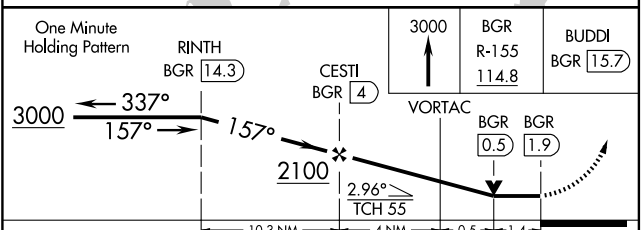
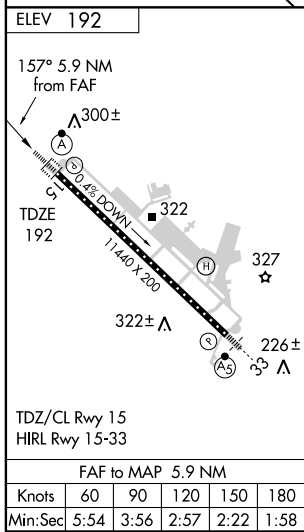
MISSED APPROACH: Climb to 3000 via BGR R-155 to BUDDI/15.7 DME and hold.

ATIS 127.75	BANGOR APP CON 124.5 239.3	BANGOR TOWER 120.7 257.8	GND CON 121.9 348.6	CLNC DEL 135.9 348.6
-----------------------	--------------------------------------	------------------------------------	-------------------------------	--------------------------------



NE-1, 22 OCT 2009 to 19 NOV 2009

NE-1, 22 OCT 2009 to 19 NOV 2009



CATEGORY	A	B	C	D	E
S-15	700/24	508 (600-1/2)	700/50	508 (600-1)	700/60 508 (600-1/2)
CIRCLING	700-1	508 (600-1)	700-1 1/2 508 (600-1/2)	760-2	568 (600-2)

BANGOR, MAINE
Amdt 4 08157

44°48'N-68°50'W

BANGOR INTL (BGR)

VOR/DME RWY 15