

# RNAV (GPS) RWY 33

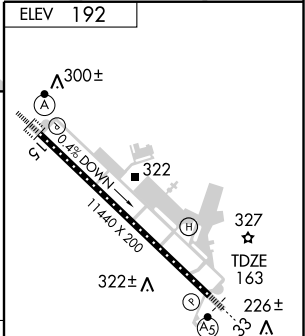
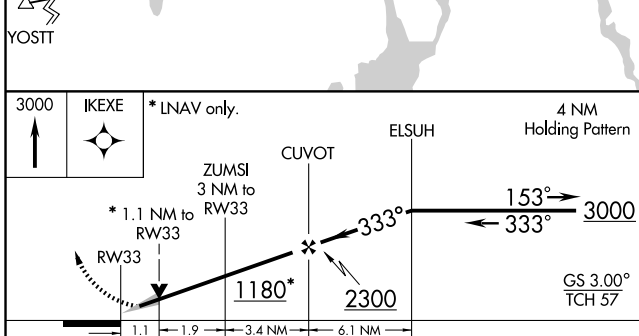
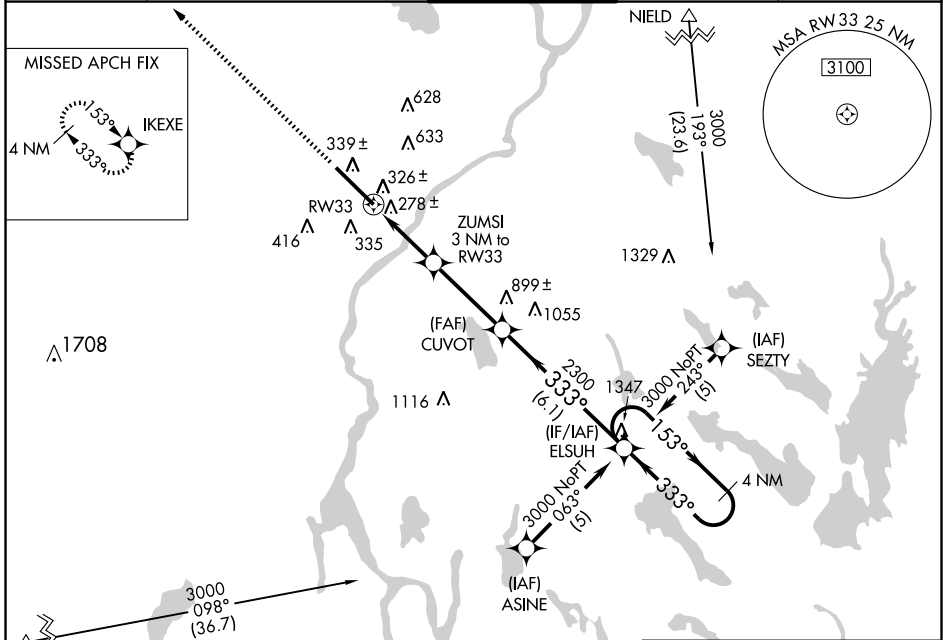
BANGOR INTL (BGR)

WAAS CH <b>78007</b> W <b>33A</b>	APP CRS <b>333°</b>	Rwy Idg <b>11440</b> TDZE <b>163</b> Apt Elev <b>192</b>
---	------------------------	--

**▼** For uncompensated Baro-VNAV systems, LNAV/VNAV NA below -15°C (5°F) or above 49°C (120°F). Circling NA NE of Rwy 15-33. For inoperative MALSR, increase LPV visibility to RVR 5000 all Cats, LNAV/VNAV Cat E visibility to 1½, and LNAV Cat D visibility to RVR 6000, Cat E visibility to 1½. DME/DME RNP-0.3 NA.

**MALSR** MISSED APPROACH: Climb to 3000 direct IKEXE and hold.

ATIS <b>127.75</b>	BANGOR APP CON <b>124.5 239.3</b>	BANGOR TOWER <b>120.7 257.8</b>	GND CON <b>121.9 348.6</b>	CLNC DEL <b>135.9 348.6</b>
-----------------------	--------------------------------------	------------------------------------	-------------------------------	--------------------------------



CATEGORY	A	B	C	D	E
LPV DA		455/24	292 (300-½)		
LNAV/VNAV DA		604/50	441 (500-1)		
LNAV MDA	580/24	417 (400-½)	580/40 417 (400-¾)	580/50	417 (400-1)
CIRCLING	640-1 448 (500-1)	660-1 468 (500-1)	660-1½ 468 (500-1½)	760-2	568 (600-2)

ELEV	192
GS	3.00°
TCH	57
TDZ/CL Rwy 15	
HIRL Rwy 15-33	

NE-1, 22 OCT 2009 to 19 NOV 2009

NE-1, 22 OCT 2009 to 19 NOV 2009