

# ILS RWY 15 (CAT III)

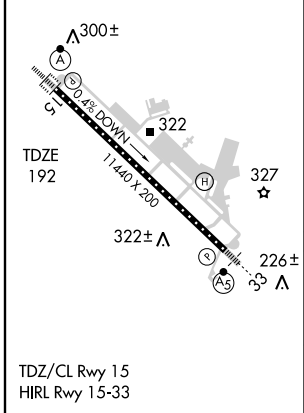
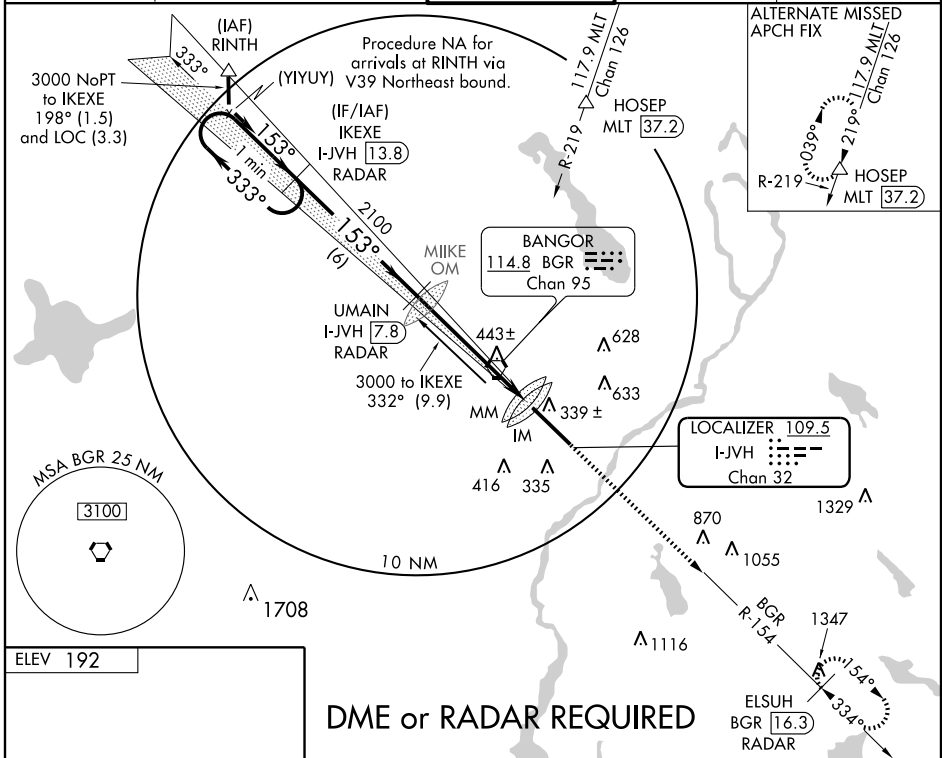
BANGOR INTL (BGR)

LOC/DME I-JVH <b>109.5</b> Chan <b>32</b>	APP CRS <b>153°</b>	Rwy Idg TDZE <b>192</b> Apt Elev <b>192</b>	<b>11440</b>
---	------------------------	---	--------------

**ASR** Circling NA NE of Rwy 15-33.  
DME or Radar Required.

**ALSIF-2** MISSED APPROACH: Climb to 3000 via heading 153° and BGR R-154 to ELSUH/BGR 16.3 DME/RADAR and hold.

ATIS <b>127.75</b>	BANGOR APP CON <b>124.5 239.3</b>	BANGOR TOWER <b>120.7 257.8</b>	GND CON <b>121.9 348.6</b>	CLNC DEL <b>135.9 348.6</b>
-----------------------	--------------------------------------	------------------------------------	-------------------------------	--------------------------------



CATEGORY	A	B	C	D
S-ILS 15			CAT IIIA RVR 07	
S-ILS 15			CAT IIIB RVR 06	
S-ILS 15			CAT IIIC NA	

**CATEGORY III ILS - SPECIAL AIRCREW & AIRCRAFT CERTIFICATION REQUIRED**

NE-1, 22 OCT 2009 to 19 NOV 2009

NE-1, 22 OCT 2009 to 19 NOV 2009