

BANGOR, MAINE

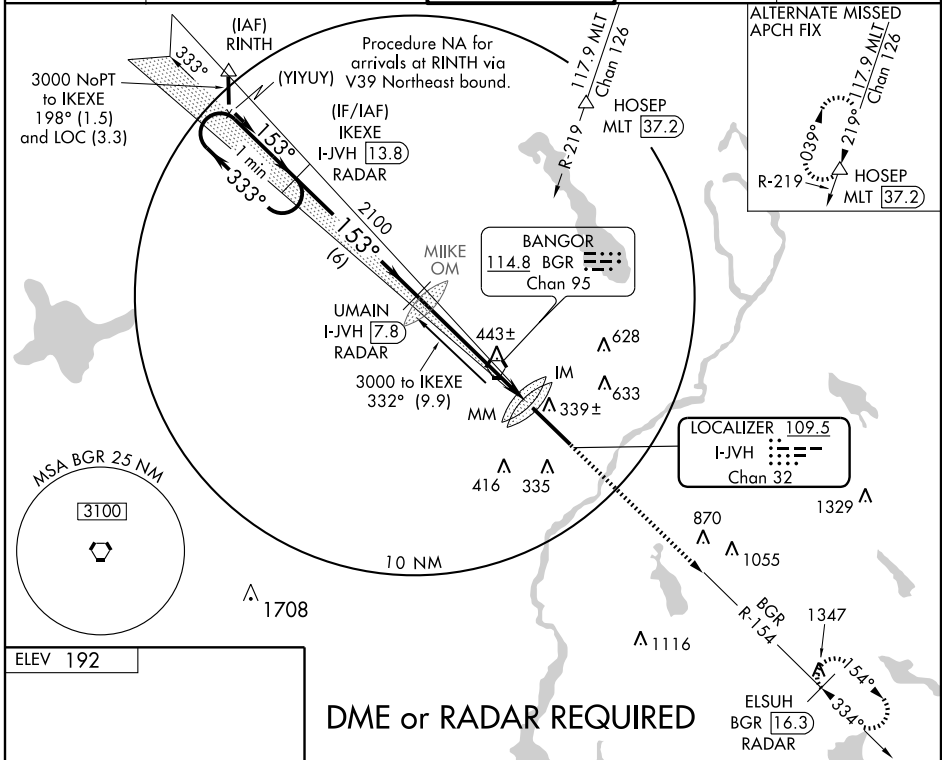
AL-39 (FAA)

ILS RWY 15 (CAT II) BANGOR INTL (BGR)

LOC/DME I-JVH 109.5 Chan 32	APP CRS 153°	Rwy Idg TDZE 192 Apt Elev 192	11440
---	------------------------	---	--------------

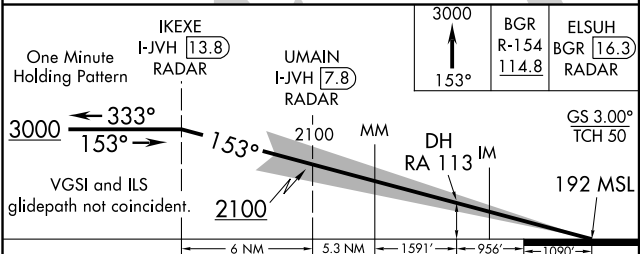
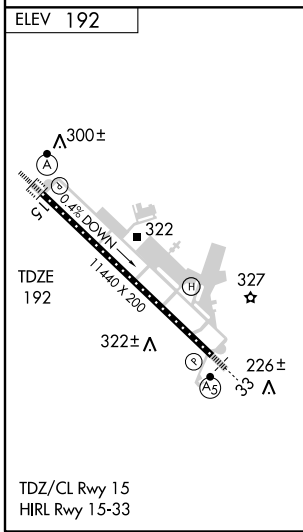
ASR Circling NA NE of Rwy 15-33. DME or Radar Required.	ALSF-2 	MISSED APPROACH: Climb to 3000 via heading 153° and BGR R-154 to ELSUH/BGR 16.3 DME/RADAR and hold.
---	------------	---

ATIS 127.75	BANGOR APP CON 124.5 239.3	BANGOR TOWER 120.7 257.8	GND CON 121.9 348.6	CLNC DEL 135.9 348.6
-----------------------	--------------------------------------	------------------------------------	-------------------------------	--------------------------------



NE-1, 22 OCT 2009 to 19 NOV 2009

NE-1, 22 OCT 2009 to 19 NOV 2009



CATEGORY	A	B	C	D
S-ILS 15		292/12	100 RA 113	

CATEGORY II ILS - SPECIAL AIRCREW & AIRCRAFT CERTIFICATION REQUIRED

BANGOR, MAINE
Amdt 6 08157

44°48'N - 68°50'W

BANGOR INTL (BGR) ILS RWY 15 (CAT II)