

BANGOR, MAINE

# HI-VOR/DME or TACAN RWY 15

VORTAC BGR 114.8 Chan 95	APCH CRS 157°	Rwy Idg 11,440 TDZE 192 Arpt Elev 192
--------------------------------	------------------	---

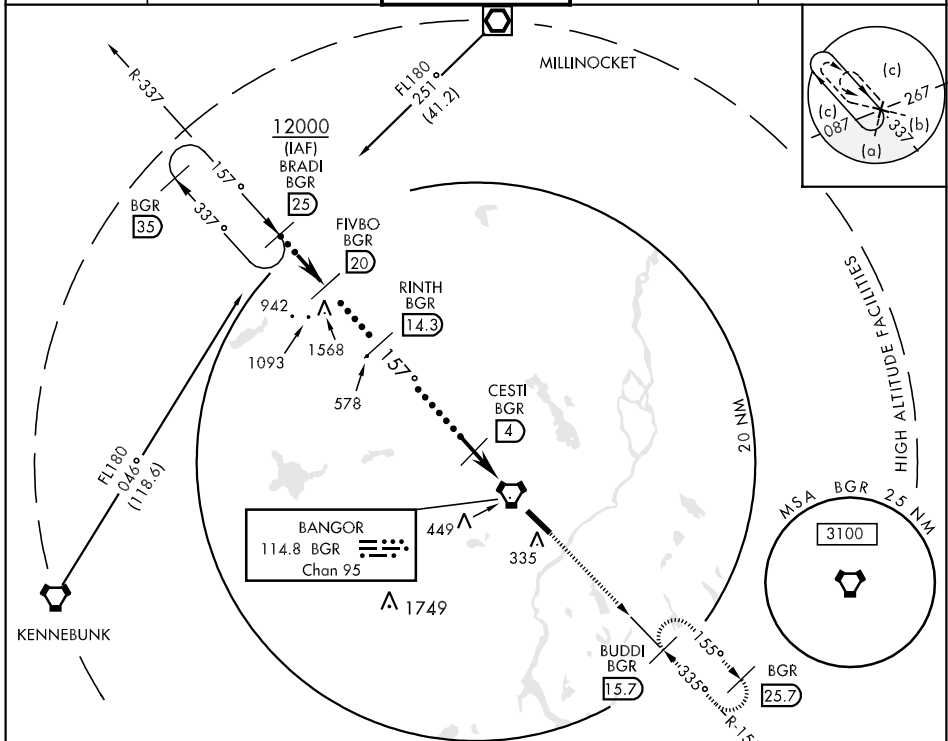
JAL-39 [USAF]

BANGOR INTL (KBGR)

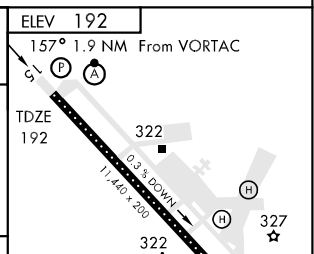
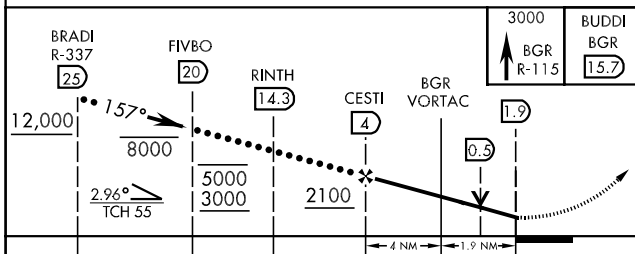
▼ \* When ALS inop increase CAT CD vis to 1½ miles, CAT E vis to 1¾ miles.  
\*\* Circling not authorized NE of Rwy 15-33.

ALSF-2  
MISSED APPROACH: Climb to 3000 via BGR VORTAC R-155 to BUDDI (R-155/15.7 DME) and hold.

ATIS 127.75	BANGOR APP CON 155°-334° 118.925 239.3 335°-154° 124.5 239.3	BANGOR TOWER 120.7 257.8	GND CON 121.9 348.6	ASR
----------------	--	-----------------------------	------------------------	-----



EMERG SAFE ALT 100 NM 7500



CATEGORY	C	D	E
S-VOR/DME, TAC 15 *	700/50	508 (600-1)	700/60 508 (600-1½)
CIRCLING **	700-1½ 508 (600-1½)	760-2	568 (600-1½)
S-ASR 15	700/50	508 (600-1)	700/60 508 (600-1½)

ELEV 192	157° 1.9 NM From VORTAC				
TDZE 192	6.3° DOWN 11,440 x 200				
TDZL/CL Rwy 15					
HIRL Rwy 15-33					
FAF to MAP 5.9 NM					
Knots	120	140	160	180	200
Min:Sec	2:57	2:32	2:13	1:58	1:46

BANGOR, MAINE  
Amdt 3 08269

44°48'N-68°50'W

BANGOR INTL (KBGR)

# HI-VOR/DME or TACAN RWY 15

NE-1, 22 OCT 2009 to 19 NOV 2009

NE-1, 22 OCT 2009 to 19 NOV 2009