

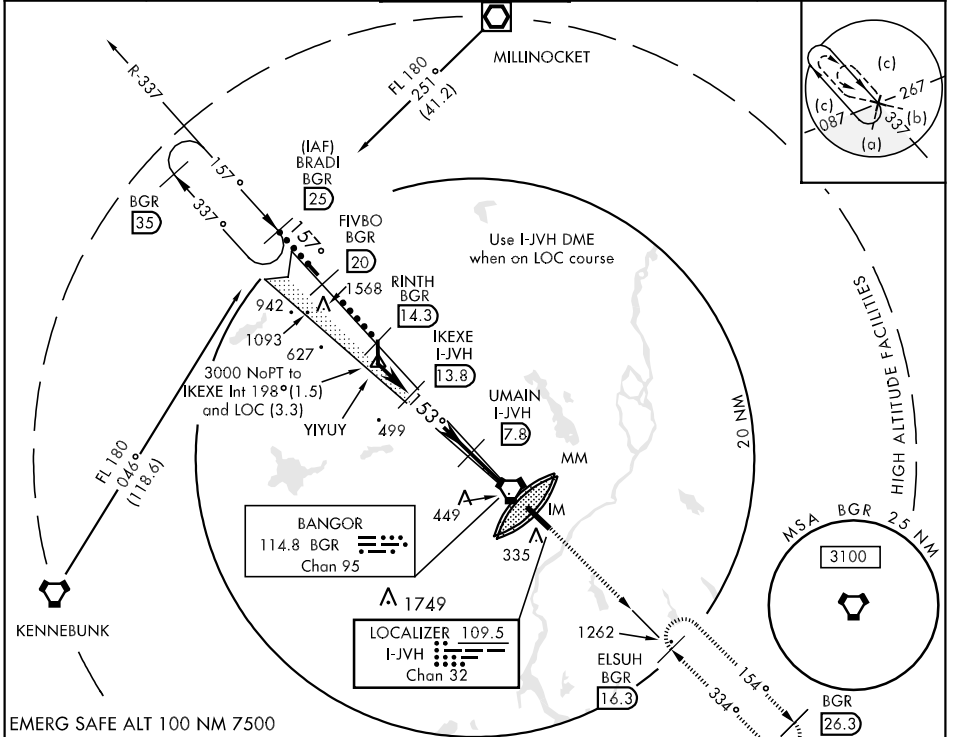
LOC/DME I-JVH 109.5 Chan 32	APCH CRS 153°	Rwy Idg 11,440 TDZE 192 Arpt Elev 192	JAL-39 [USAF]	BANGOR INTL (KBGR)
---	-------------------------	--	---------------	--------------------

** When ALS inop increase CAT C/D RVR to 40.
 *** When ALS inop increase CAT E vis to 1 1/4 miles.
 *** Circling not authorized NE of Rwy 15-33.

 ALSF-2

 MISSED APPROACH: Climb to 3000 via Heading 153° and BGR VORTAC R-154 to ELSUH (BGR-154/16.3 DME) and hold.

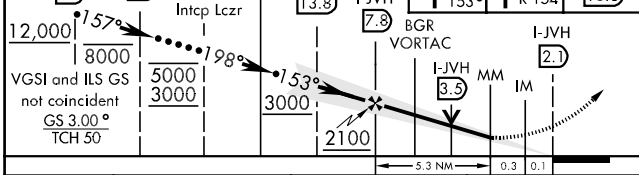
ATIS 127.75	BANGOR APP CON 155°-334° 118.925 239.3 335°-154° 124.5 239.3	BANGOR TOWER 120.7 257.8	GND CON 121.9 348.6	ASR
-----------------------	--	------------------------------------	-------------------------------	-----



NE-1, 22 OCT 2009 to 19 NOV 2009

NE-1, 22 OCT 2009 to 19 NOV 2009

BRADI R-337 25	FIVBO BGR 20	RINTH BGR 14.3	IKEXE I-JVH 13.8	UMAIN I-JVH 7.8	ELSUH BGR 16.3
-----------------------	---------------------	-----------------------	-------------------------	------------------------	-----------------------



CATEGORY	C	D	E
S-ILS 15*	392/18	200 (200-3/4)	392/24 200 (200-1/2)
S-LOC 15**	700/50	508 (600-1)	700/60 508 (600-1 1/4)
CIRCLING***	700-1 1/2 508 (600-1 1/2)	760-2	568 (600-2)
S-ASR 15	700/50	508 (600-1)	700/60 508 (600-1 1/4)

