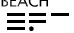
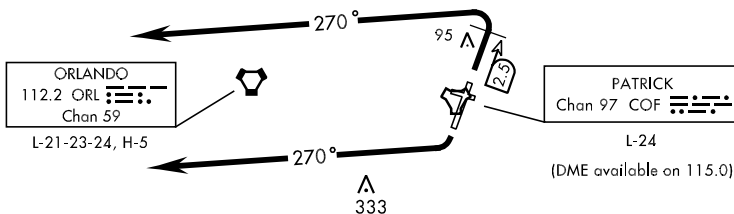
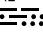



ATIS ★ 119.175 273.5
 CLNC DEL
 118.4 289.4
 GND CON
 124.35 335.8
 PATRICK TOWER ★
 133.75 269.375
 ORLANDO DEP CON
 132.65 281.425


ORMOND BEACH
 112.6 OMN 
 Chan 73
 L-21-23-24, H-5


RADAR AND DME REQUIRED



MELBOURNE
 110.0 MLB 
 Chan 37
 L-23-24

LAKELAND
 116.0 LAL 
 Chan 107
 L-21-24, H-5

PAHOKEE
 115.4 PHK 
 Chan 101
 L-23, H-5

VERO BEACH
 117.3 VRB 
 Chan 120
 L-24, H-5

NOTE: Chart not to scale.

DEPARTURE ROUTE DESCRIPTION

Expect RADAR vectors to filed/assigned route.
 Expect clearance to filed altitude/flight level 10 minutes after departure.

TAKE-OFF RWY 2: Cross DER at or above 10' AGL/18' MSL, track runway heading climb and maintain 2000. At COF TACAN 2.5 DME turn left heading 270°.
 Note: All aircraft shall not commence turn prior to 2.5 DME due to noise abatement.

TAKE-OFF RWY 20: Cross DER at or above 20' AGL/25' MSL, track runway heading climb and maintain 2000. After departure end of runway turn right heading 270°.