

RNAV (GPS) RWY 12L

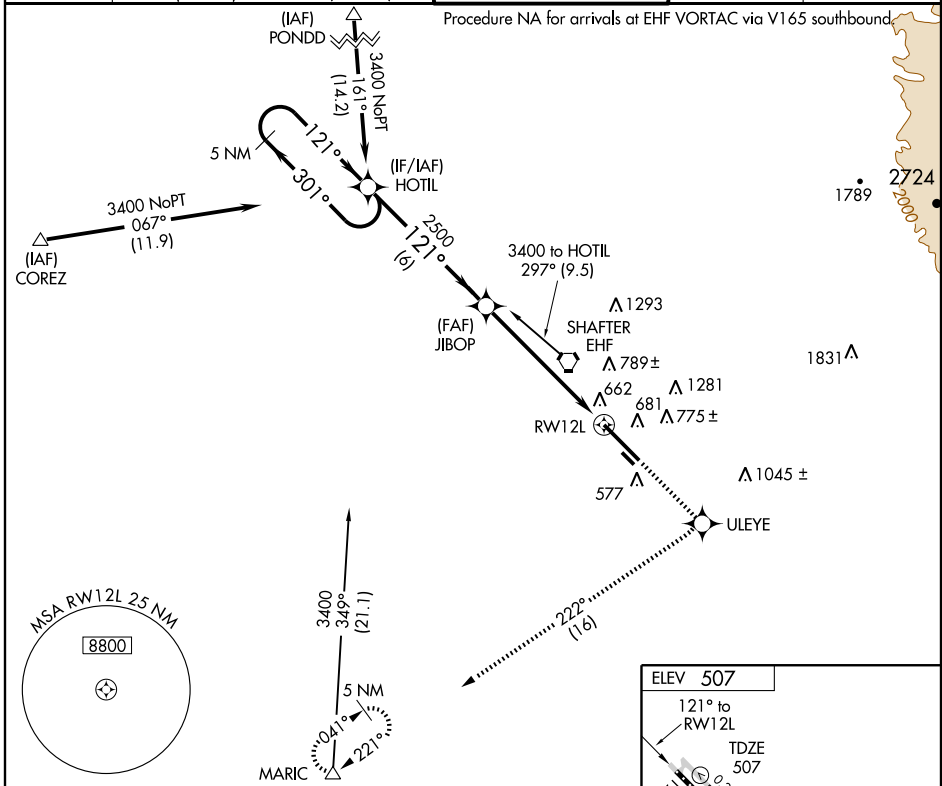
BAKERSFIELD/MEADOWS FIELD (BFL)

| | | |
|-------------|----------|--------------|
| APP CRS | Rwy Idg | 10855 |
| 121° | TDZE | 507 |
| | Apt Elev | 507 |

▼ When local altimeter setting not received use Delano Muni altimeter setting and increase all MDA 80 feet and increase LNAV Cat D visibility ¼ mile. Circling NA northeast of Rwy 12L-30R. DME/DME RNP- 0.3 NA.

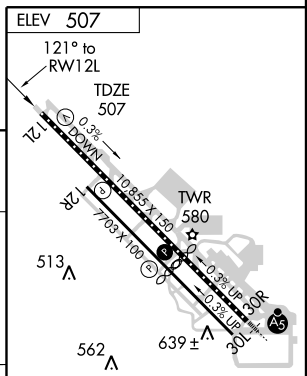
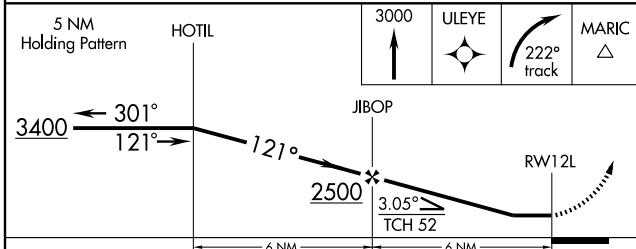
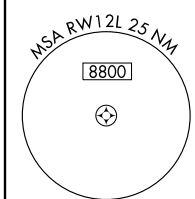
MISSED APPROACH: Climb to 3000 direct ULEYE and right turn via 222° track to MARIC and hold.

| | | | | |
|----------------------|---|---|-------------------------|-------------------------|
| ATIS 118.6 | BAKERSFIELD APP CON* 118.8 284.625 118.9 270.3 (SOUTH) (NORTH) | BAKERSFIELD TOWER* 118.1 (CTAF) 257.8 | GND CON 121.7 | UNICOM 122.95 |
|----------------------|---|---|-------------------------|-------------------------|



SW-3, 22 OCT 2009 to 19 NOV 2009

SW-3, 22 OCT 2009 to 19 NOV 2009



| CATEGORY | A | B | C | D |
|----------|----------------------|----------------------|------------------------|-----------------------|
| LNAV MDA | 920-1 | 413 (500-1) | 920-1¼ | 413 (500-1¼) |
| CIRCLING | 920-1 413 (500-1) | 960-1 453 (500-1) | 960-1½ 453 (500-1½) | 1060-2 553 (600-2) |

TDZ/CL Rwy 30R
HIRL Rwy 12L-30R
MIRL Rwy 12R-30L