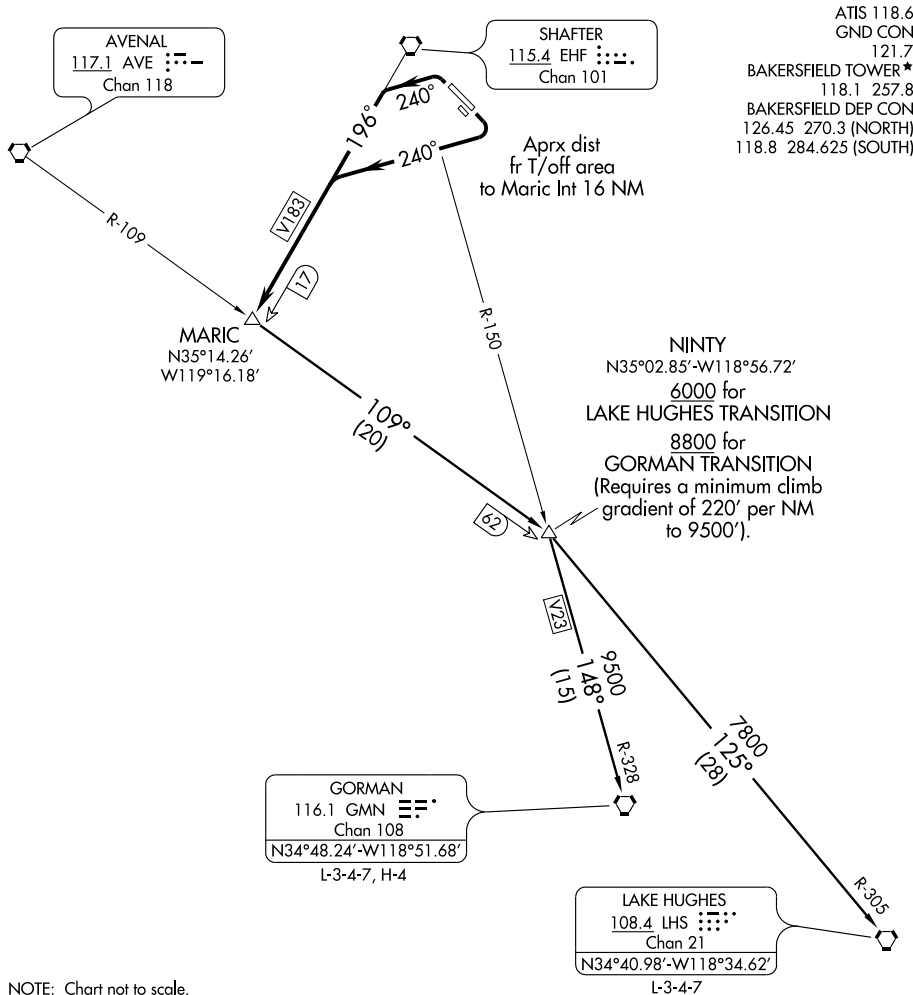


# MARIC THREE DEPARTURE

SL-36 (FAA)

BAKERSFIELD/MEADOWS FIELD (BFL)  
BAKERSFIELD, CALIFORNIA



SW-3, 22 OCT 2009 to 19 NOV 2009

SW-3, 22 OCT 2009 to 19 NOV 2009

## DEPARTURE ROUTE DESCRIPTION

TAKE-OFF RUNWAYS 12L/R: Turn right heading 240°. Thence....

TAKE-OFF RUNWAYS 30L/R: Turn left heading 240°. Thence....

....intercept and proceed via the EHF R-196 to MARIC INT. Thence via (transition) or (assigned route).

GORMAN TRANSITION (MARIC3.GMN): From over MARIC INT via AVE R-109 and GMN R-328 to GMN VORTAC.

LAKE HUGHES TRANSITION (MARIC3.LHS): From over MARIC INT via AVE R-109 and LHS R-305 to LHS VORTAC.

# MARIC THREE DEPARTURE