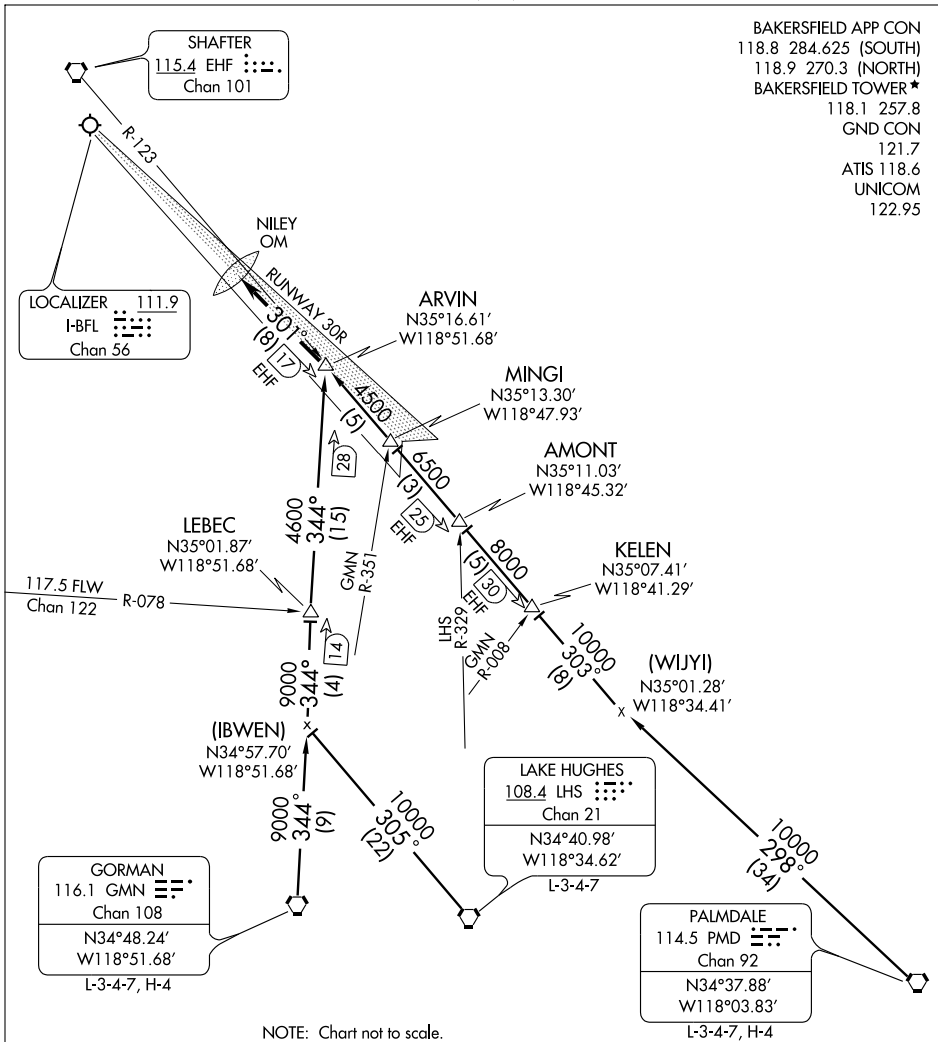


BAKERSFIELD APP CON
118.8 284.625 (SOUTH)
118.9 270.3 (NORTH)
BAKERSFIELD TOWER*
118.1 257.8
GND CON
121.7
ATIS 118.6
UNICOM
122.95



SW-3, 22 OCT 2009 to 19 NOV 2009

SW-3, 22 OCT 2009 to 19 NOV 2009

GORMAN TRANSITION (GMN.ARVIN1): From over GMN VORTAC via GMN R-344 to ARVIN INT. Thence....

LAKE HUGHES TRANSITION (LHS.ARVIN1): From over LHS VORTAC via LHS R-305 and GMN R-344 to ARVIN INT. Thence....

PALMDALE TRANSITION (PMD.ARVIN1): From over PMD VORTAC via PMD R-298 and EHF R-123 to ARVIN INT. Thence....

...From over ARVIN INT via the I-BFL ILS 30R localizer to NILEY OM.

LOST COMMUNICATIONS: From over ARVIN INT via I-BFL ILS 30R to NILEY OM.