

BAKER CITY, OREGON

AL-35 (FAA)

VOR/DME BKE 115.3 Chan 100	APP CRS 135°	Rwy Idg TDZE Apt Elev N/A N/A 3372
--	------------------------	--

VOR-A
BAKER CITY MUNI (BKE)

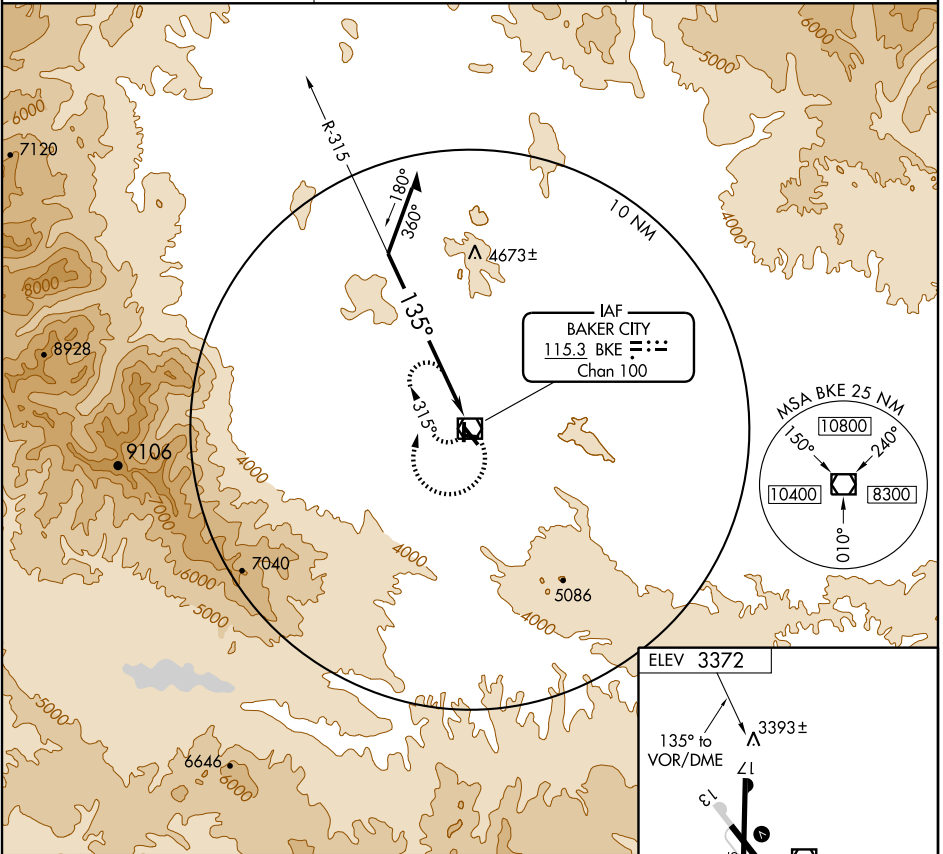


MISSED APPROACH: Climbing right turn to 6900 in BKE VOR/DME holding pattern.

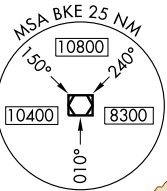
ASOS
134.275

SALT LAKE CENTER
128.05 387.15

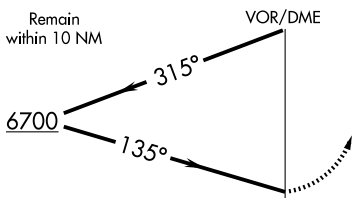
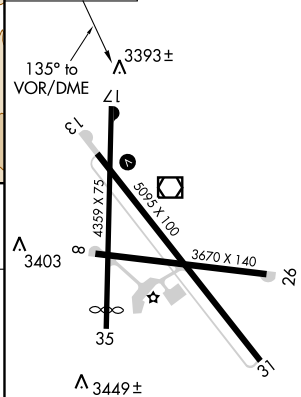
UNICOM
123.0 (CTAF)



IAF
BAKER CITY
115.3 BKE
Chan **100**



ELEV 3372



CATEGORY	A	B	C	D
CIRCLING	5200-1¼ 1828 (1900-1¼)	5200-1½ 1828 (1900-1½)	5200-3	1828 (1900-3)

MIRL Rwy 13-31

NW-1, 22 OCT 2009 to 19 NOV 2009

NW-1, 22 OCT 2009 to 19 NOV 2009

BAKER CITY, OREGON
Amdt 1A 09183

44°50'N - 117°49'W

BAKER CITY MUNI (BKE)
VOR-A