

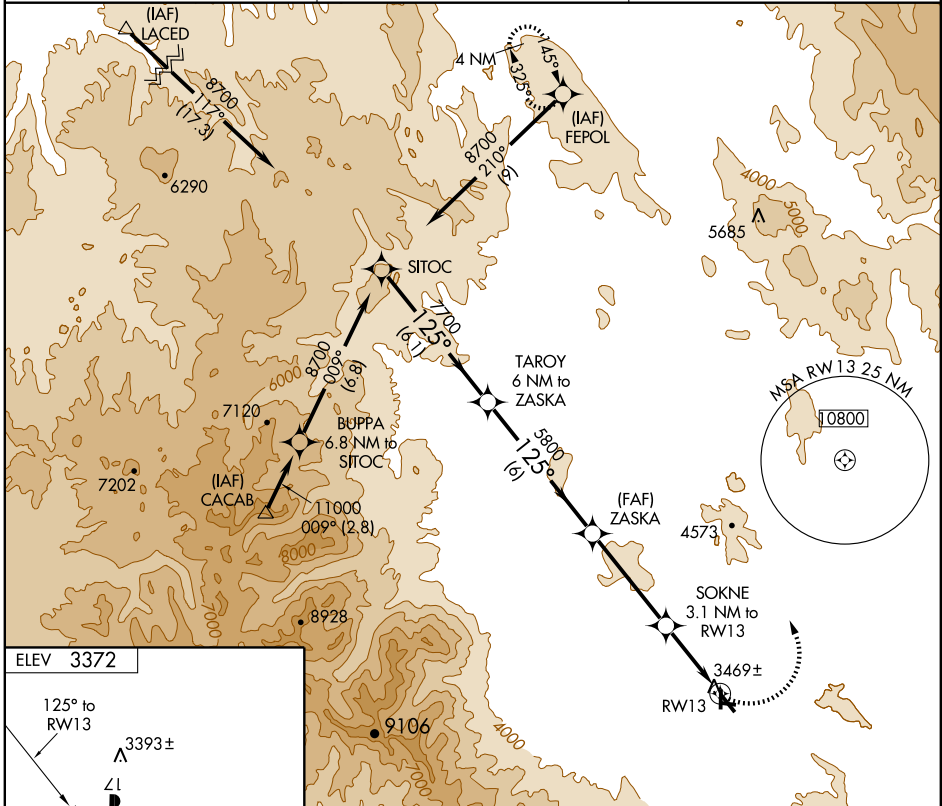
RNAV (GPS) RWY 13

BAKER CITY MUNI (BKE)

APP CRS 125°	Rwy Idg 5095
	TDZE 3370
	Apt Elev 3372

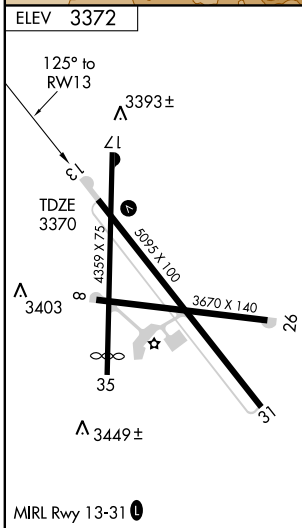
	DME/DME RNP- 0.3 NA.	MISSED APPROACH: Climbing left turn to 9000 direct FEPOL and hold.
--	----------------------	--

ASOS 134.275	SALT LAKE CENTER 128.05 387.15	UNICOM 123.0 (CTAF)
------------------------	--	-------------------------------



NW-1, 22 OCT 2009 to 19 NOV 2009

NW-1, 22 OCT 2009 to 19 NOV 2009



	SITOC	TAROY 6 NM to ZASKA	ZASKA	SOKNE 3.1 NM to RW13	9000	FEPOL
	8700	7700	5800	4420		
Procedure	Turn	NA				
	6.1 NM		6 NM	4.2 NM	3.1 NM	
CATEGORY	A		B		C	D
LNAV MDA	4080-1 710 (800-1)		4080-2 710 (800-2)		4080-2½ 710 (800-2¼)	4080-2¼ 710 (800-2¼)
CIRCLING	4080-1 708 (800-1)		4080-2 708 (800-2)		4220-2¾ 848 (900-2¾)	4220-2¾ 848 (900-2¾)