

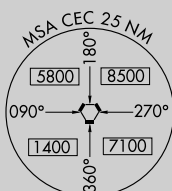
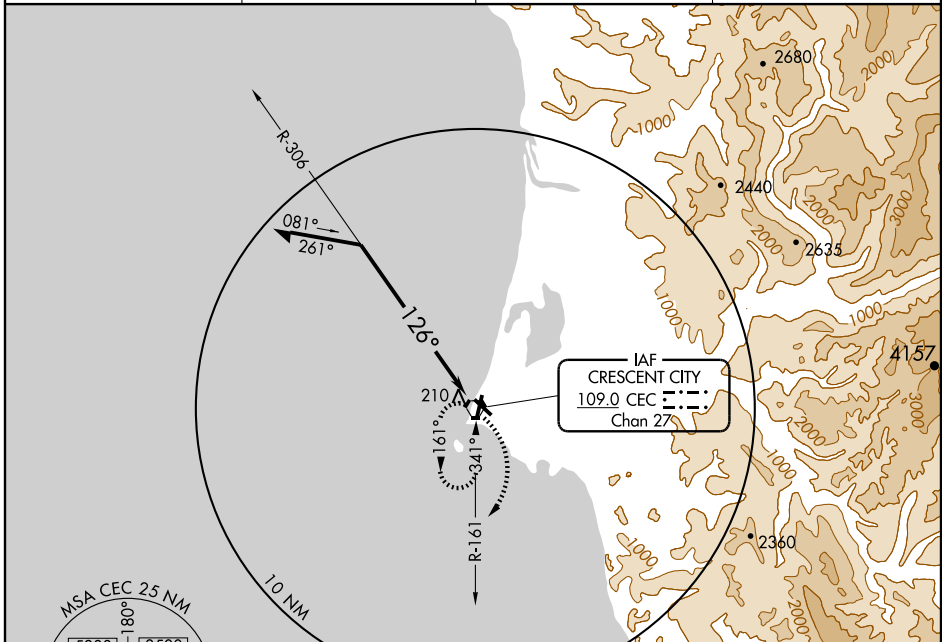
VOR RWY 11

CRESCENT CITY/ JACK MC NAMARA FIELD (CEC)

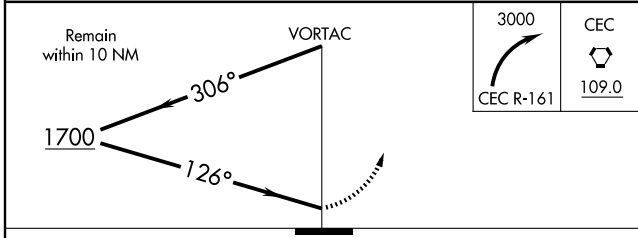
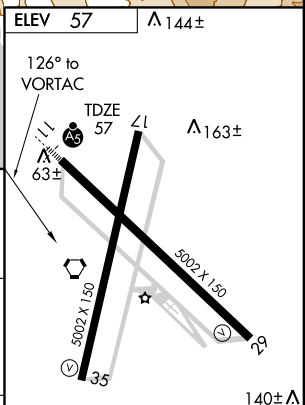
VORTAC CEC 109.0 Chan 27	APP CRS 126°	Rwy Idg TDZE Apt Elev	5002 57 57
---------------------------------------	------------------------	-----------------------------	---------------------------------------

▽ Inoperative table does not apply to Cat D.	MALSR 	MISSED APPROACH: Climbing right turn to 3000 via CEC R-161 then direct CEC VORTAC and hold.
---	-----------	---

ASOS 119.925	SEATTLE CENTER 124.85 306.3	OAKLAND RADIO 122.3	UNICOM 122.8 (CTAF) 0
------------------------	---------------------------------------	-------------------------------	--



ELEV 57	△ 144±
---------	--------



CATEGORY	A	B	C	D
S-11	520-1/2 463 (500-1/2)		520-3/4 463 (500-3/4)	520-1 463 (500-1)
CIRCLING	540-1 483 (500-1)		540-1 483 (500-1)	640-2 583 (600-2)

HIRL Rwy 11-29 **0**
MIRL Rwy 17-35 **0**
REIL Rws 17, 29 and 35 **0**

VOR RWY 11

SW-2, 22 OCT 2009 to 19 NOV 2009

SW-2, 22 OCT 2009 to 19 NOV 2009