

# RNAV (GPS) RWY 11

CRESCENT CITY/ JACK MC NAMARA FIELD (C/C)

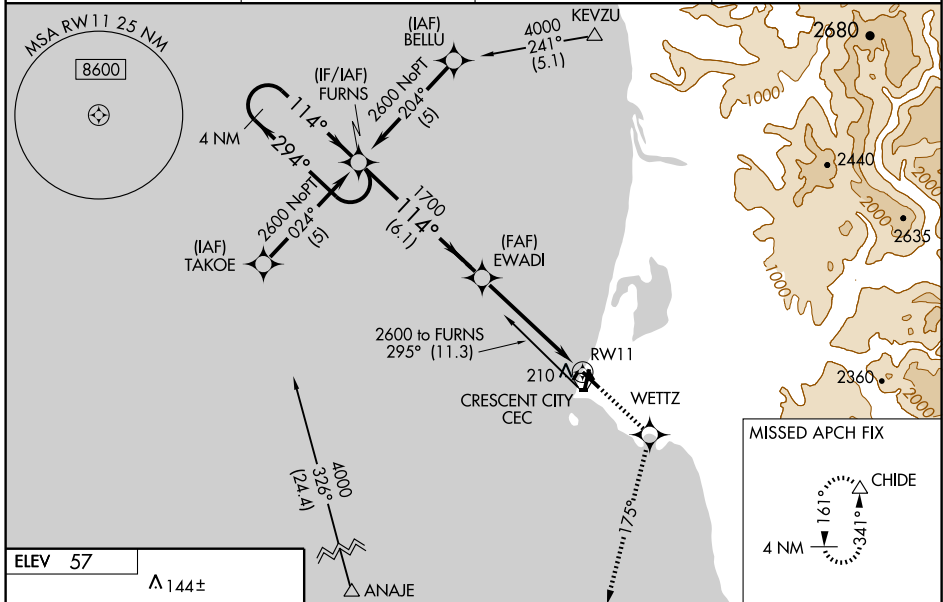
WAAS CH <b>90310</b> <b>W11A</b>	APP CRS <b>114°</b>	Rwy Idg <b>5002</b>
		TDZE <b>57</b>
		Apt Elev <b>57</b>

**⚠** For uncompensated Baro-VNAV systems, LNAV/VNAV NA below -15°C (5°F) or above 48°C (118°F). DME/DME RNP -0.3 NA. When local altimeter setting not received, use Brookings altimeter setting and increase all DA 98 feet and all MDA 100 feet. Increase LPV all Cats visibility ¼ mile, LNAV/VNAV all Cats visibility ¼ mile, LNAV Cat C and D ½ mile, and Circling Cat C and D ¼ mile. VDP and Baro-VNAV NA when using Brookings altimeter setting. For inoperative MALSR, increase LNAV Cat D visibility to 1 ¼ mile. For inoperative MALSR when using Brookings altimeter setting, increase LPV all Cats visibility to 1 ¼ mile.

**MALSR**

**MISSED APPROACH:** Climb to 3000 direct WETZ and via 175° track to CHIDE and hold, continue climb-in-hold to 3000.

ASOS <b>119.925</b>	SEATTLE CENTER <b>124.85 306.3</b>	OAKLAND RADIO <b>122.3</b>	UNICOM <b>122.8 (CTAF) 0</b>
------------------------	---------------------------------------	-------------------------------	---------------------------------



**ELEV 57**

**△ 144±**

**△ 163±**

**△ 140±**

114° to RW11

63±

TDZE 57

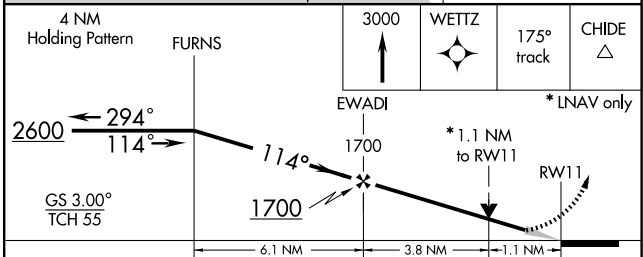
5002 X 150

35

HIRL Rwy 11-29 **0**

REIL Rwys 17, 29 and 35 **0**

MIRL Rwy 17-35 **0**



CATEGORY	A	B	C	D
LPV DA	307-½		250 (300-½)	
LNAV/VNAV DA	556-1¼		499 (500-1¼)	
LNAV MDA	460-½	403 (500-½)	460-¾ 403 (500-¾)	460-1 403 (500-1)
CIRCLING	540-1	483 (500-1)	540-1½ 483 (500-1½)	640-2 583 (600-2)

SW-2, 22 OCT 2009 to 19 NOV 2009

SW-2, 22 OCT 2009 to 19 NOV 2009