


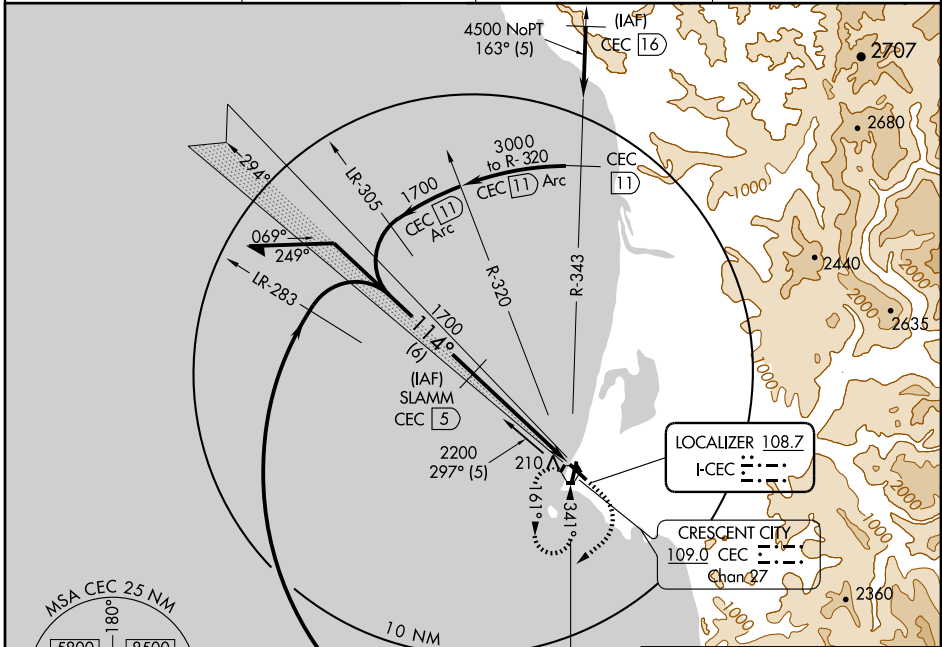
# ILS/DME RWY 11

CRESCENT CITY/ JACK MC NAMARA FIELD (CEC)

LOC I-CEC <b>108.7</b>	APP CRS <b>114°</b>	Rwy Idg <b>5002</b>
		TDZE <b>57</b>
		Apt Elev <b>57</b>

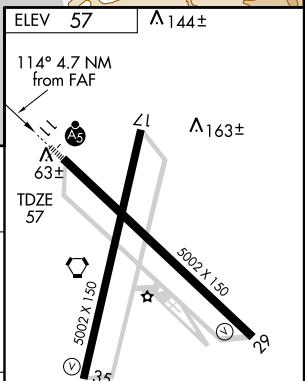
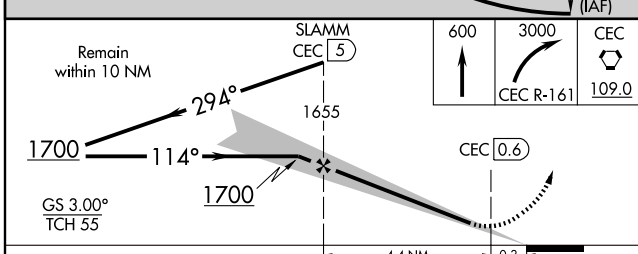
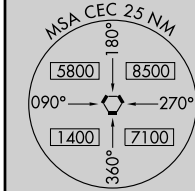
<p><b>▼</b> DME from CEC VORTAC. Simultaneous reception of I-CEC and CEC DME required. Inoperative table does not apply to S-LOC 11 Cat D.</p>	<p>MALSR  </p>	<p>MISSED APPROACH: Climb to 600 then climbing right turn to 3000 via CEC R-161, then direct CEC VORTAC and hold.</p>
--	---	---

ASOS <b>119.925</b>	SEATTLE CENTER <b>124.85 306.3</b>	OAKLAND RADIO <b>122.3</b>	UNICOM <b>122.8 (CTAF) 0</b>
------------------------	---------------------------------------	-------------------------------	---------------------------------



SW-2, 22 OCT 2009 to 19 NOV 2009

SW-2, 22 OCT 2009 to 19 NOV 2009



CATEGORY	A	B	C	D
S-ILS 11		257-½ 200 (200-½)		
S-LOC 11		320-½ 263 (300-½)		320-1 263 (300-1)
CIRCLING	540-1 483 (500-1)		540-1½ 483 (500-1½)	640-2 583 (600-2)

**HIRL Rwy 11-29** 0  
**REIL Rwys 17, 29 and 35** 0  
**MIRL Rwy 17-35** 0