

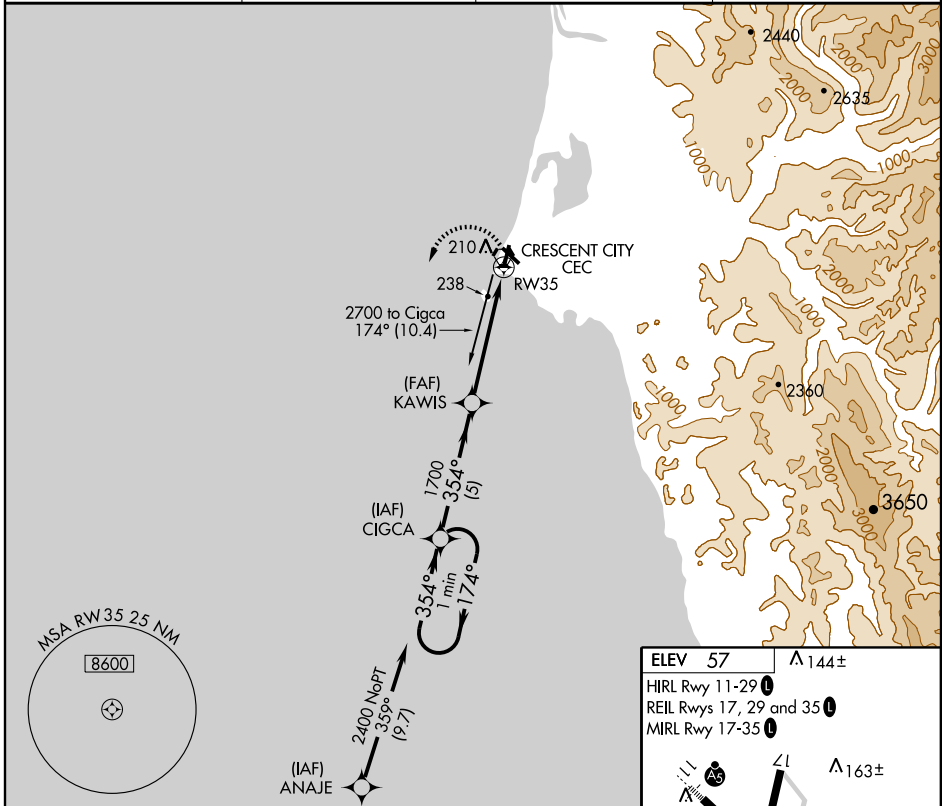
# GPS RWY 35

CRESCENT CITY/ JACK MC NAMARA FIELD (CEC)

APP CRS <b>354°</b>	Rwy Idg <b>5002</b>
	TDZE <b>56</b>
	Apt Elev <b>57</b>

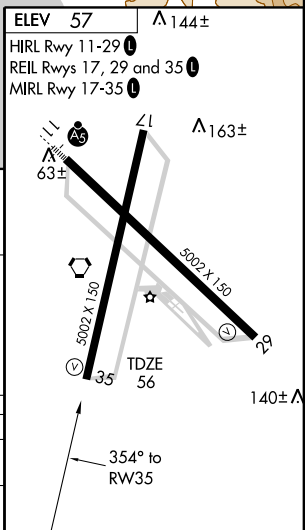
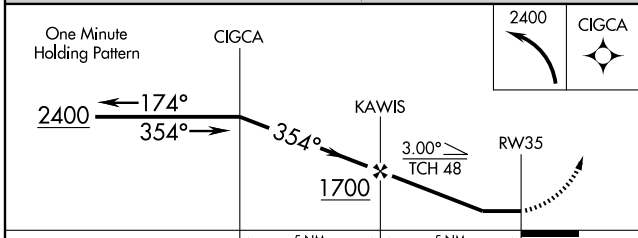
	MISSED APPROACH: Climbing left turn to 2400 direct CIGCA WP and hold.		
	ASOS <b>119.925</b>	SEATTLE CENTER <b>124.85 306.3</b>	OAKLAND RADIO <b>122.3</b>

UNICOM <b>122.8</b> (CTAF)
-------------------------------



SW-2, 22 OCT 2009 to 19 NOV 2009

SW-2, 22 OCT 2009 to 19 NOV 2009



CATEGORY	A	B	C	D
S-35	500-1 444 (500-1)		500-1½ 444 (500-1½)	500-1½ 444 (500-1½)
CIRCLING	540-1 483 (500-1)		540-1½ 483 (500-1½)	640-2 583 (600-2)

# GPS RWY 35