

RNAV (GPS) RWY 6

OSCODA-WURTSMITH (OSC)

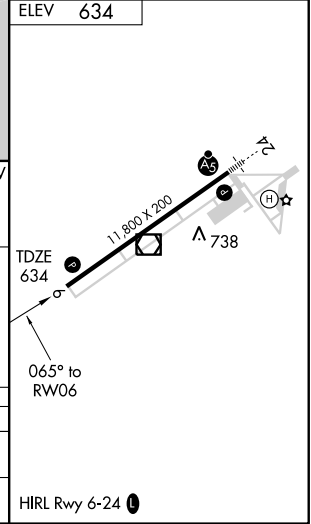
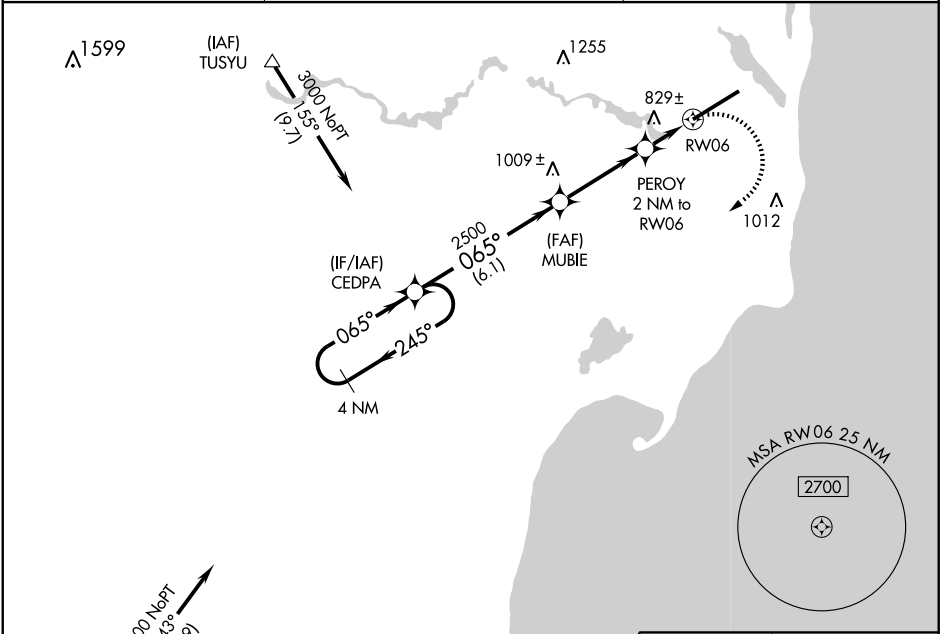
APP CRS	Rwy Idg	11,800
065°	TDZE	634
	Apt Elev	634

▼ Circling NA southeast of Rwy 6-24. DME/DME RNP-0.3 NA. VDP NA when using Alpena altimeter setting. When local altimeter setting not received, use Alpena altimeter setting and increase all MDAs 100 feet, increase visibility for LNAV Cats C and D and Circling Cat C ¼ mile.

▲

MISSED APPROACH: Climbing right turn to 3500 direct SNOWWW and hold.

AWOS-3 116.1	MINNEAPOLIS CENTER 118.525 251.15	UNICOM 123.0 (CTAF) ①
------------------------	---	---------------------------------



4 NM Holding Pattern	CEDPA	MUBIE	PEROW 2 NM to RW06	RW06	3500 SNOWWW
3000	2500	2500	1320	1320	634
← 245°	065°	065°	3.05°	065°	
065°					
6.1 NM		3.6 NM		0.8	1.2

CATEGORY	A	B	C	D
LNAV MDA	1080-1	446 (500-1)	1080-1¼ 446 (500-1¼)	1080-1½ 446 (500-1½)
CIRCLING	1140-1	506 (600-1)	1140-1½ 506 (600-1½)	1200-2 566 (600-2)

EC-1, 22 OCT 2009 to 19 NOV 2009

EC-1, 22 OCT 2009 to 19 NOV 2009