

ILS or LOC/DME RWY 24

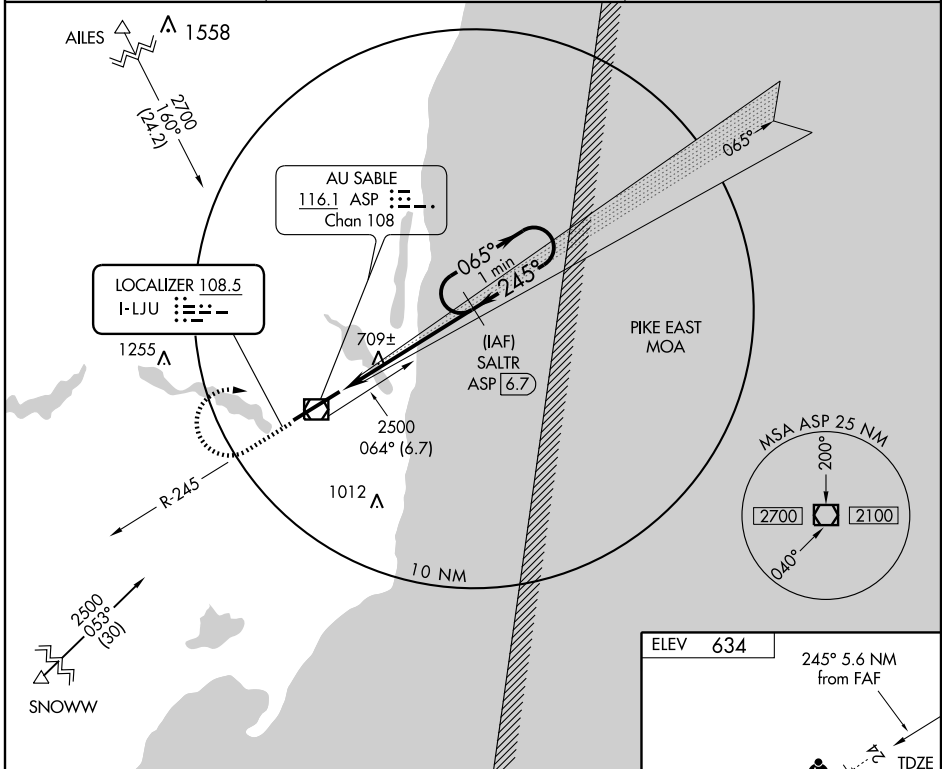
OSCODA-WURTSMITH (OSC)

LOC I-LJU 108.5	APP CRS 245°	Rwy Idg 11,800 TDZE 624 Apt Elev 634
---------------------------	------------------------	---

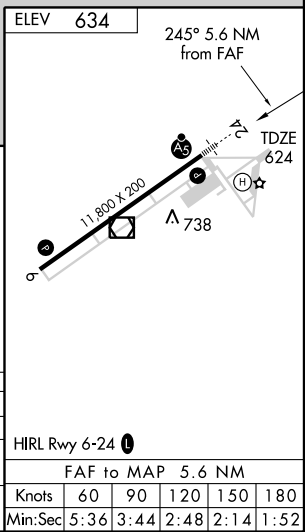
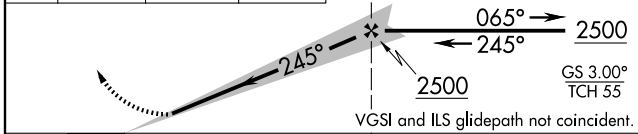
⚠ Circling NA SouthEast of Rwy 6-24.
DME from ASP VOR/DME.
⚠ NA Simultaneous reception of I-LJU and ASP DME required.
For inoperative MALSRL, increase S-LOC 24 Cat D visibility to 1.

MALSRL MISSED APPROACH: Climb to 1100 then climbing right turn to 2500 via heading 096° and ASP R-064 to SALTR and hold.

AWOS-3 116.1	MINNEAPOLIS CENTER 118.525 251.15	UNICOM 123.0 (CTAF) 0
------------------------	---	---------------------------------



1100	2500	ASP R-064 <u>116.1</u>	SALTR ASP <u>6.7</u>	SALTR ASP <u>6.7</u>	One Minute Holding Pattern
HDG 096°					



CATEGORY	A		B		C		D	
S-ILS 24	824-1/2		200 (200-1/2)					
S-LOC 24	960-1/2		336 (400-1/2)		960-3/4		336 (400-3/4)	
CIRCLING	1140-1		506 (600-1)		1140-1 1/2		1200-2	
					506 (600-1 1/2)		566 (600-2)	

EC-1, 22 OCT 2009 to 19 NOV 2009

EC-1, 22 OCT 2009 to 19 NOV 2009