

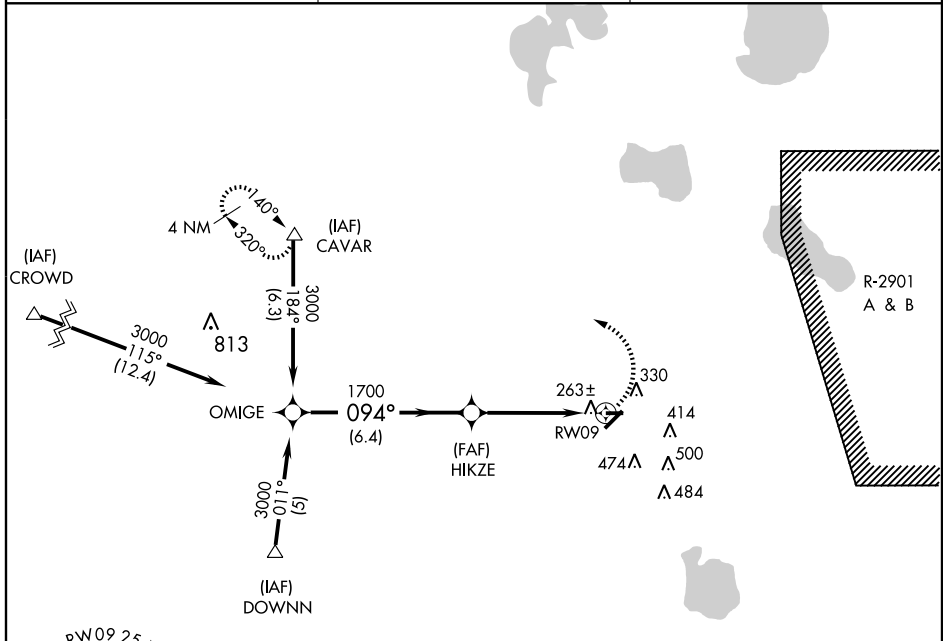
GPS RWY 9
AVON PARK EXECUTIVE (AVO)

APP CRS 094°	Rwy Idg 3844
	TDZE 154
	Apt Elev 156

▲ NA Use Orlando Intl altimeter. Straight-in minimums NA at night.

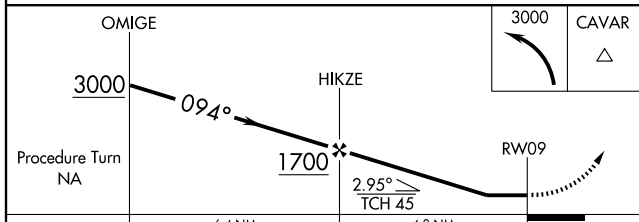
MISSED APPROACH: Climbing left turn to 3000 direct CAVAR WP and hold.

AWOS-3 118.725	MIAMI CENTER 134.55 257.7	UNICOM 122.8 (CTAF)
--------------------------	-------------------------------------	-------------------------------



SE-3, 22 OCT 2009 to 19 NOV 2009

SE-3, 22 OCT 2009 to 19 NOV 2009



	6.4 NM		4.8 NM	
CATEGORY	A	B	C	D
S-9	640-1	486 (500-1)	NA	
CIRCLING	820-1	664 (700-1)	NA	

