

AUGUSTA, MAINE

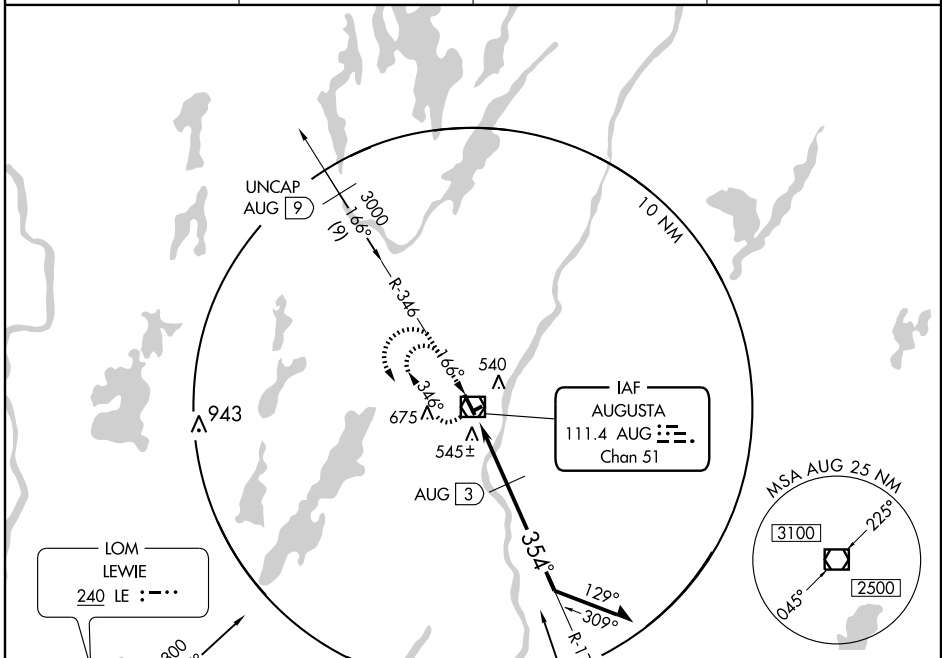
AL-29 (FAA)

VOR/DME AUG <b>111.4</b> Chan 51	APP CRS <b>354°</b>	Rwy Idg TDZE Apt Elev	<b>5001</b> <b>351</b> <b>352</b>
--	------------------------	-----------------------------	---

# VOR RWY 35

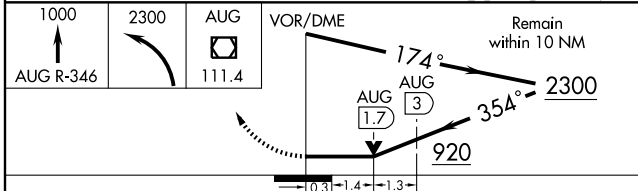
AUGUSTA STATE (AUG)

		MISSED APPROACH: Climb to 1000 via AUG R-346, then climbing left turn to 2300 direct AUG VOR/DME and hold.	
ASOS <b>118.325</b>	PORTLAND APP CON* <b>128.35 299.2</b>	CLNC DEL <b>119.95</b>	UNICOM <b>123.0 (CTAF) 0</b>

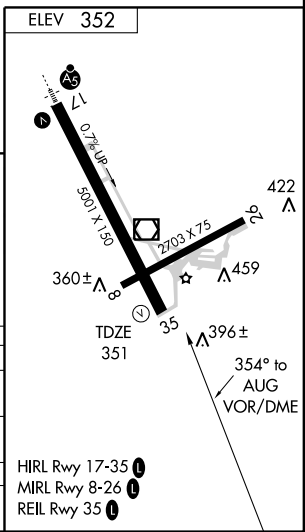


NE-1, 22 OCT 2009 to 19 NOV 2009

NE-1, 22 OCT 2009 to 19 NOV 2009



CATEGORY	A	B	C	D
S-35	920-1	569 (600-1)	920-1½ 569 (600-1½)	920-1¾ 569 (600-1¾)
CIRCLING	920-1 568 (600-1)	980-1 628 (700-1)	980-1¾ 628 (700-1¾)	980-2 628 (700-2)
DME MINIMA				
S-35	800-1	449 (500-1)	800-1½ 449 (500-1½)	800-1½ 449 (500-1½)



- HIRL Rwy 17-35 0
- MIRL Rwy 8-26 0
- REIL Rwy 35 0

AUGUSTA, MAINE  
Amdt 5A 08325

44°19'N - 69°48'W

# AUGUSTA STATE (AUG) VOR RWY 35