

RNAV (GPS) RWY 8

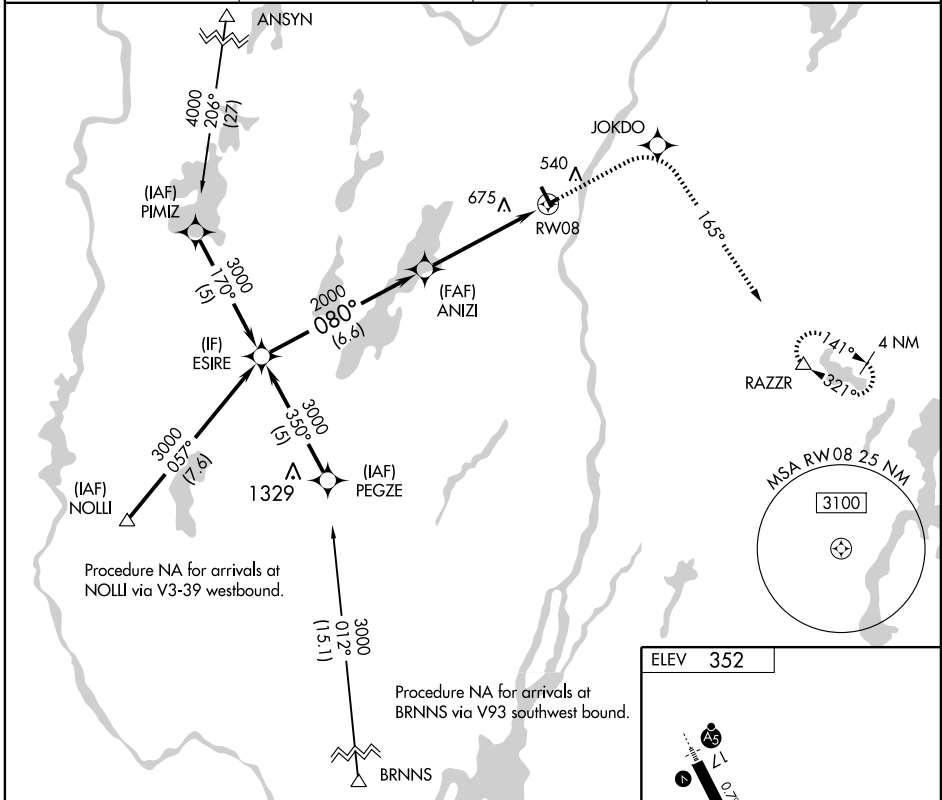
AUGUSTA STATE (AUG)

APP CRS	Rwy Idg	2703
080°	TDZE	352
	Apt Elev	352

⚠ DME/DME RNP-0.3 NA. Visibility reduction by helicopters NA. When local altimeter setting not received, use Waterville altimeter setting and increase all MDA 40 feet and LNAV Cat C and D visibility ¼ mile.

MISSED APPROACH: Climb to 3000 direct JOKDO and via 165° track to RAZZR and hold.

ASOS 118.325	PORTLAND APP CON* 128.35 299.2	CLNC DEL 119.95	UNICOM 123.0 (CTAF) 0
------------------------	--	---------------------------	---------------------------------

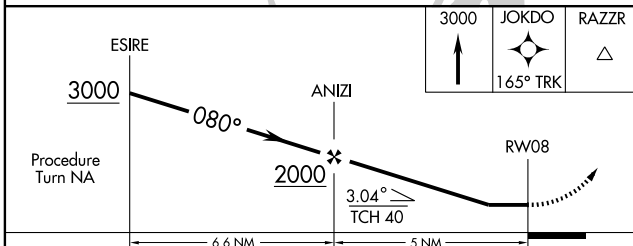


NE-1, 22 OCT 2009 to 19 NOV 2009

NE-1, 22 OCT 2009 to 19 NOV 2009

Procedure NA for arrivals at NOLLI via V3-39 westbound.

Procedure NA for arrivals at BRNNNS via V93 southwest bound.



ELEV	352
------	------------

080° to RWY 08

MIRL Rwy 8-26 **0**
HIRL Rwy 17-35 **0**
REIL Rwy 35 **0**

CATEGORY	A	B	C	D
LNAV MDA	940-1 588 (600-1)		940-1½ 588 (600-1½)	940-1¾ 588 (600-1¾)
CIRCLING	940-1 588 (600-1)	980-1 628 (700-1)	980-1¾ 628 (700-1¾)	980-2 628 (700-2)