

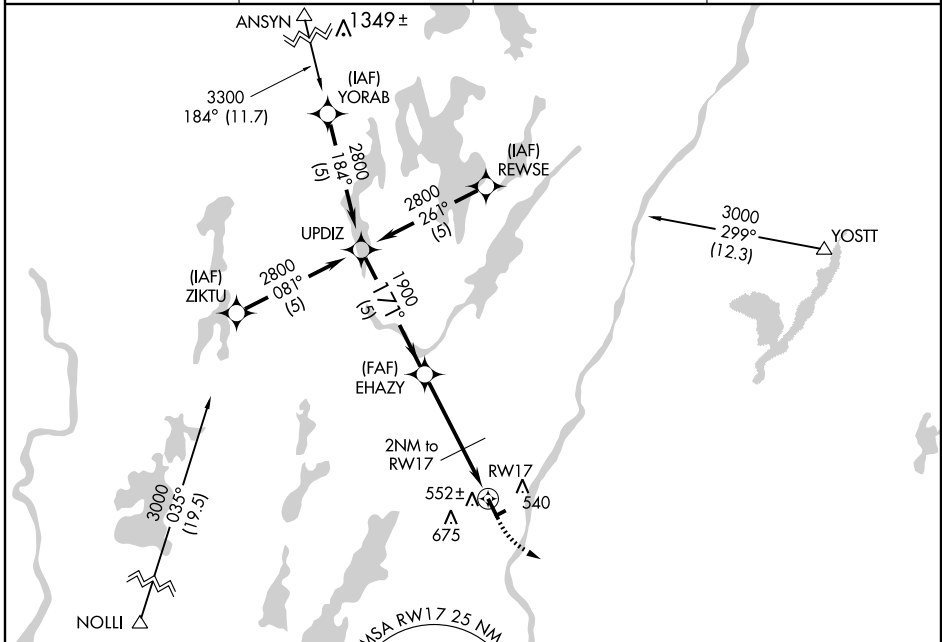
GPS RWY 17

AUGUSTA STATE (AUG)

APP CRS	Rwy Idg	5001
171°	TDZE	349
	Apt Elev	352

NA	MALSR 	MISSED APPROACH: Climbing left turn to 3000 direct RAZZR WP and hold.	
----	-----------	---	--

ASOS 118.325	PORTLAND APP CON* 128.35 299.2	CLNC DEL 119.95	UNICOM 123.0 (CTAF)
------------------------	--	---------------------------	-------------------------------



NE-1, 22 OCT 2009 to 19 NOV 2009

NE-1, 22 OCT 2009 to 19 NOV 2009

ELEV 352

MIRL Rwy 8-26

HIRL Rwy 17-35

REIL Rwy 35

	UPDIZ	EHAZY	3000	RAZZR
	2800	1900		
Procedure Turn NA	VGS1 and descent angle not coincident			
	5 NM	3 NM	2 NM	
CATEGORY	A	B	C	D
S-17	780-½ 431 (500-½)	780-¾ 431 (500-¾)	780-1 431 (500-1)	780-1 431 (500-1)
CIRCLING	920-1 568 (600-1)	980-1 628 (700-1)	980-1¾ 628 (700-1¾)	980-2 628 (700-2)