

AUGUSTA, GEORGIA

AL-28 (FAA)

NDB or GPS RWY 11

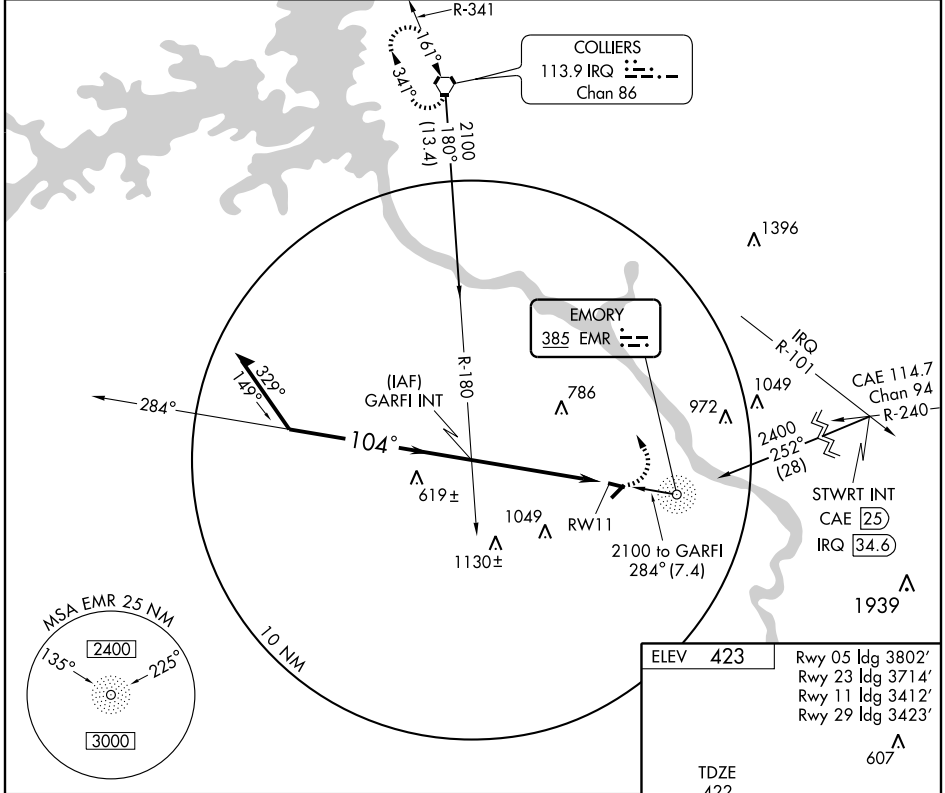
AUGUSTA/ DANIEL FIELD (DNL)

NDB EMR 385	APP CRS 104°	Rwy ldg TDZE Apt Elev	3412 422 423
-----------------------	------------------------	-----------------------------	---

NA
ASR

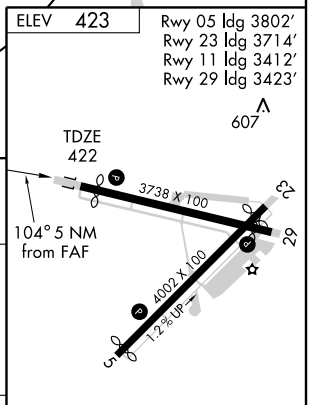
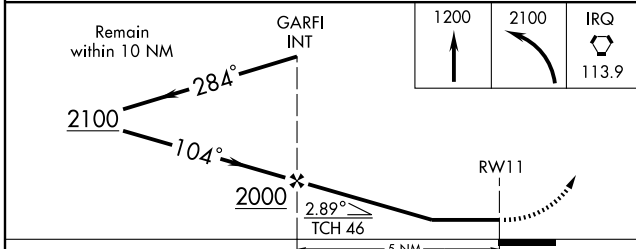
MISSED APPROACH: Climb to 1200 then climbing left turn to 2100 direct IRQ VORTAC and hold.

ASOS 135.275	AUGUSTA APP CON * 126.8 270.3	UNICOM 123.05 (CTAF) 1
------------------------	---	----------------------------------



SE-4, 22 OCT 2009 to 19 NOV 2009

SE-4, 22 OCT 2009 to 19 NOV 2009



CATEGORY	A	B	C	D
S-11	980-1 558 (600-1)		980-1½ 558 (600-1½)	980-1¾ 558 (600-1¾)
CIRCLING	980-1 557 (600-1)		980-1½ 557 (500-1½)	1020-2 597 (600-2)

MIRL Rwy 11-29 and 5-23 1

REIL Rwy 11 and 29 1

FAF to MAP 5 NM

Knots	60	90	120	150	180
Min:Sec	5:00	3:20	2:30	2:00	1:40

AUGUSTA, GEORGIA
Amdt 3A 08269

33° 28' N-82° 02' W

AUGUSTA/ DANIEL FIELD (DNL)

NDB or GPS RWY 11