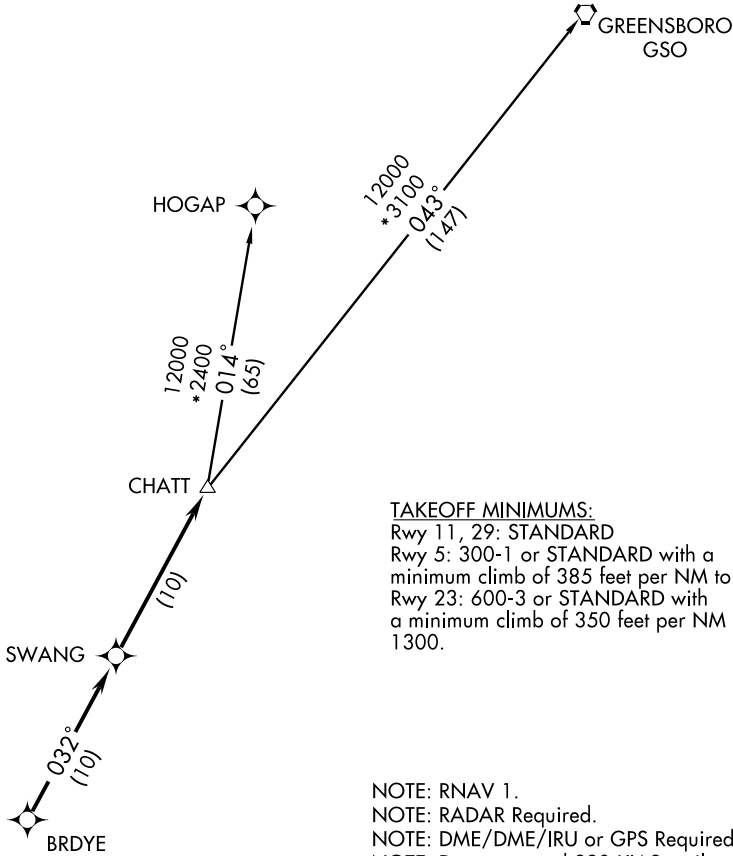


(CHATT2.CHATT) 08269

AUGUSTA/ DANIEL FIELD (DNL)  
AUGUSTA, GEORGIA

# CHATT TWO DEPARTURE (RNAV) SL-28 (FAA)

AUGUSTA DEP CON ★  
126.8 270.3  
ATLANTA CENTER CLNC DEL ★  
128.1  
CTAF  
123.05



**TAKEOFF MINIMUMS:**  
 Rwy 11, 29: STANDARD  
 Rwy 5: 300-1 or STANDARD with a minimum climb of 385 feet per NM to 800.  
 Rwy 23: 600-3 or STANDARD with a minimum climb of 350 feet per NM to 1300.

- NOTE: RNAV 1.
- NOTE: RADAR Required.
- NOTE: DME/DME/IRU or GPS Required.
- NOTE: Do not exceed 230 KIAS until advised by ATC.
- NOTE: For Turbojet aircraft during Masters golf tournament week.
- NOTE: For non-GPS equipped aircraft: BZM, CLT, GRD, IRQ, and SPA DMEs must be operational.

SE-4, 22 OCT 2009 to 19 NOV 2009

SE-4, 22 OCT 2009 to 19 NOV 2009

NOTE: Chart not to scale

(NARRATIVE ON FOLLOWING PAGE)

CHATT TWO DEPARTURE (RNAV)  
(CHATT2.CHATT) 08269

AUGUSTA, GEORGIA  
AUGUSTA/ DANIEL FIELD (DNL)