

AUGUSTA APP CON *
119.15 284.625
AUGUSTA RGNL ATIS
132.75

GREENSBORO
116.2 GSO
Chan 109
N36°02.74' - W79°58.58'
L-25-36, H-9-12

LIARS
N34°47.21' - W80°36.23'
TURBOJET VERTICAL NAVIGATION
PLANNING INFORMATION
Expect clearance to cross at or below FL180.

FLORENCE
115.2 FLO
Chan 99
N34°13.98' - W79°39.43'
L-23-24-35-36, H-9-12

NOTE: RADAR and DME required.

NOTE: Chart not to scale.

DOUGH
N34°00.74'
W80°58.77'

COLLIERS
113.9 IRG
Chan 86

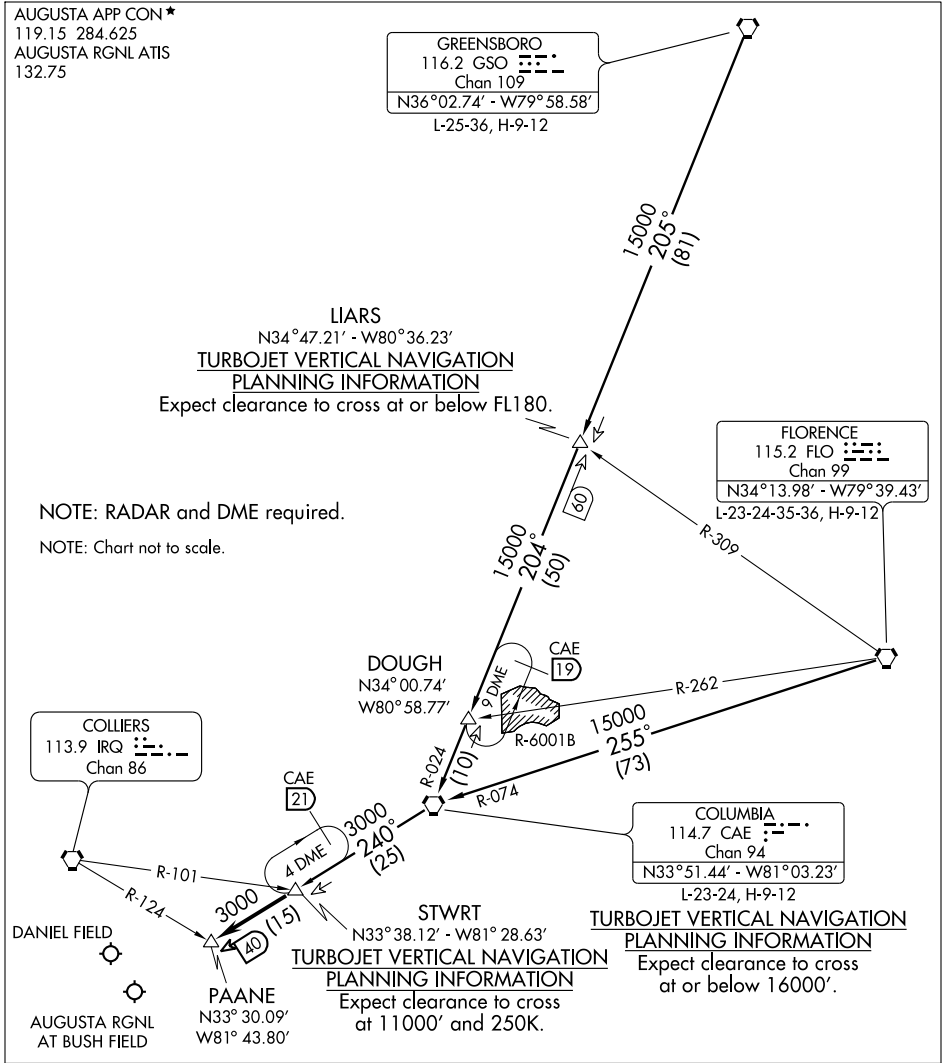
COLUMBIA
114.7 CAE
Chan 94
N33°51.44' - W81°03.23'
L-23-24, H-9-12

DANIEL FIELD
AUGUSTA RGNL
AT BUSH FIELD

PAANE
N33°30.09'
W81°43.80'

STWRT
N33°38.12' - W81°28.63'
TURBOJET VERTICAL NAVIGATION
PLANNING INFORMATION
Expect clearance to cross
at 11000' and 250K.

TURBOJET VERTICAL NAVIGATION
PLANNING INFORMATION
Expect clearance to cross
at or below 16000'.



SE-4, 22 OCT 2009 to 19 NOV 2009

SE-4, 22 OCT 2009 to 19 NOV 2009

COLUMBIA TRANSITION (CAE.STWRT2): From over CAE VORTAC via CAE R-240 to STWRT INT. Thence. . . .
FLORENCE TRANSITION (FLO.STWRT2): From over FLO VORTAC via FLO R-255 and CAE R-074 to CAE VORTAC, then via CAE R-240 to STWRT INT. Thence. . . .
GREENSBORO TRANSITION (GSO.STWRT2): From over GSO VORTAC via GSO R-205 to LIARS INT, then via CAE R-024 to CAE VORTAC, then via CAE R-240 to STWRT INT. Thence. . . .
. . . . from over STWRT INT, via the CAE R-240 to PAANE INT. Expect radar vectors to airport after PAANE.