

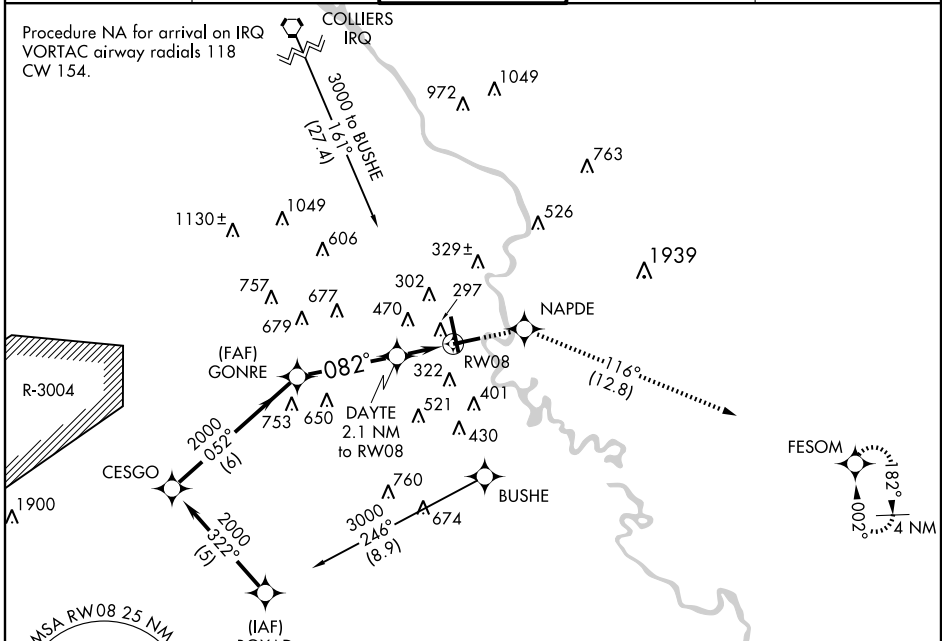
RNAV (GPS) RWY 8

AUGUSTA RGNL AT BUSH FIELD (AGS)

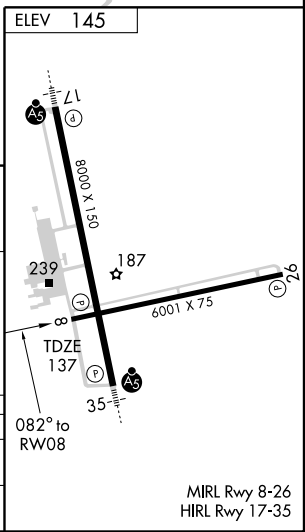
APP CRS	Rwy Idg	6001
082°	TDZE	137
	Apt Elev	145

<p>NA Straight-in minimums NA at night. Circling to Rwy 8 NA at night. When VGSI inoperative, circling Rwy 26 NA at night. ASR GPS or RNP-0.3 Required. DME/DME RNP-0.3 NA.</p>	<p>MISSED APPROACH: Climb to 3000 direct NAPDE WP and climbing right turn via 116° track to FESOM WP and hold.</p>
--	---

<p>ATIS 132.75</p>	<p>AUGUSTA APP CON * 126.8 270.3</p>	<p>AUGUSTA TOWER * 118.7(CTAF) 239.3</p>	<p>GND CON 121.9 348.6</p>
<p>UNICOM 122.95</p>			



	<p>CESGO</p> <p>2000</p> <p>052°</p>	<p>GONRE</p> <p>2000</p> <p>082°</p>	<p>DAYTE 2.1 NM to RW08</p> <p>840</p> <p>3.00 TCH 55</p>	<p>RW08</p>	<p>3000</p> <p>NAPDE</p> <p>116° TRK</p> <p>FESOM</p>
Procedure Turn NA	6 NM	3.6 NM	2.1 NM		
CATEGORY	A	B	C	D	
RNAV MDA	700-1	563 (600-1)	700-1½ 563 (700-1½)	700-1¾ 563 (700-1¾)	
CIRCLING	780-1	635 (700-1)	780-1¾ 635 (700-1¾)	780-2 635 (700-2)	



SE-4, 22 OCT 2009 to 19 NOV 2009

SE-4, 22 OCT 2009 to 19 NOV 2009