

RNAV (GPS) RWY 26

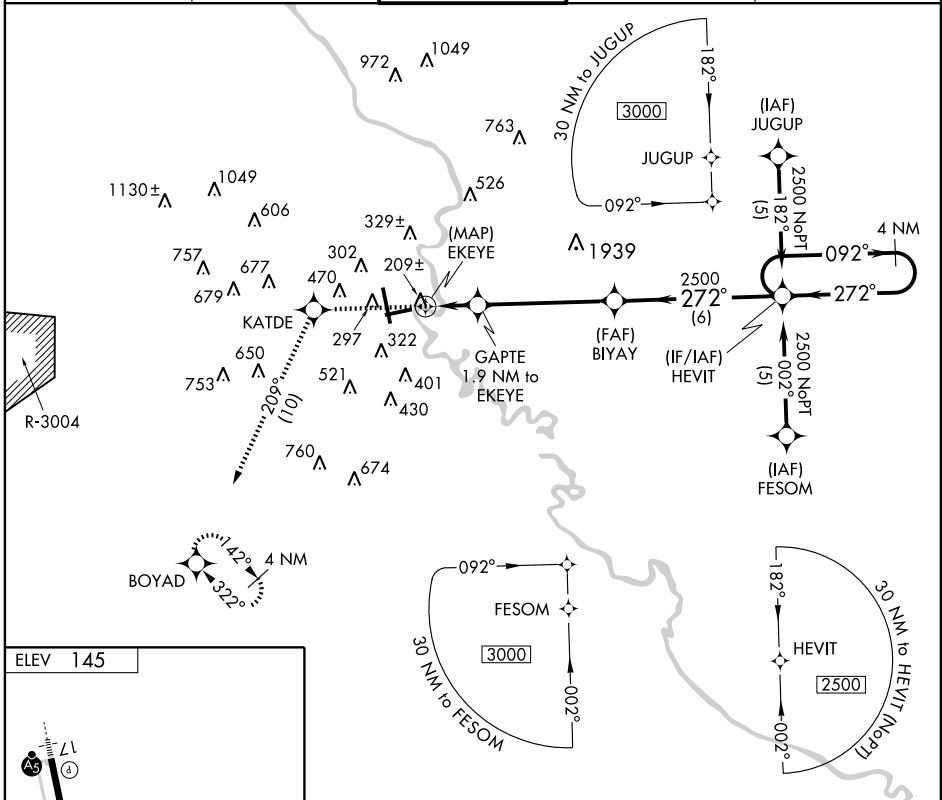
AUGUSTA RGNL AT BUSH FIELD (AGS)

APP CRS	Rwy Idg	6001
272°	TDZE	139
	Apt Elev	145

NA When VGSI inoperative, straight-in/circling Rwy 26 procedure NA at night. Circling to Rwy 8 NA at night. DME/DME ASR RNP-0.3 NA. Visibility reduction by helicopters NA.

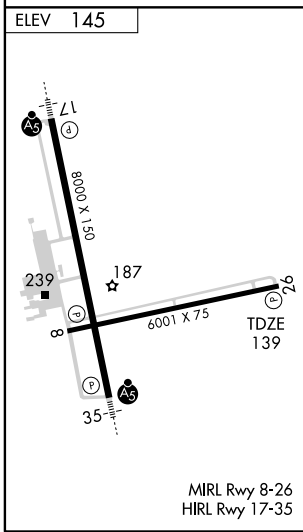
MISSED APPROACH: Climb to 3000 direct KATDE WP and climbing left turn via 209° track to BOYAD WP and hold.

ATIS 132.75	AUGUSTA APP CON* 126.8 270.3	AUGUSTA TOWER* 118.7 (CTAF) 239.3	GND CON 121.9 348.6	UNICOM 122.95
-----------------------	--	--	-------------------------------	-------------------------



SE-4, 22 OCT 2009 to 19 NOV 2009

SE-4, 22 OCT 2009 to 19 NOV 2009



	3000	KATDE	BOYAD	VGSI and descent angles not coincident.	4 NM Holding Pattern	
		209° TRK		BIYAY	HEVIT	
		GAPTE 1.9 NM to EKEYE		272°	092°	
		EKEYE		2500	2500	
		940		≤ 3.00° TCH 55		
	0.5	1.9 NM	4.9 NM	6 NM		
CATEGORY	A		B		C	
LNAV MDA	540-1 401 (400-1)		540-1¼ 401 (400-1¼)			
CIRCLING	780-1 635 (700-1)		780-1¾ 635 (700-1¾)		780-2 635 (700-2)	