

KAOLN THREE DEPARTURE (RNAV)

6000 SE-4, 22 OCT 2009 to 19 NOV 2009



DEPARTURE ROUTE DESCRIPTION

TAKEOFF RWY 8, 17, 26, 35: Climb on assigned heading for radar vectors to PARRR, then via depicted route to KAOLN. Thence....

.... maintain altitude assigned by ATC. Expect clearance to filed altitude/flight level within 10 minutes after departure.

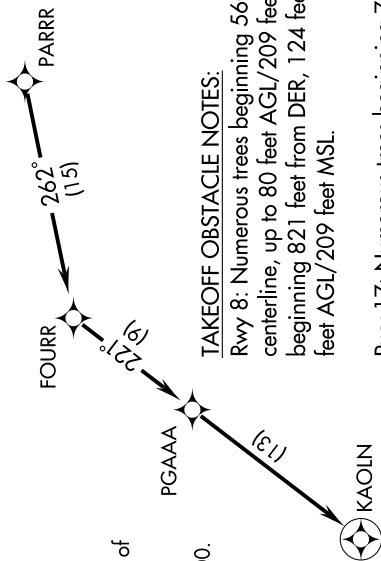
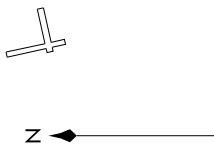
AUGUSTA TOWER ★
118.7 (CTAF) 239.3
AUGUSTA DEP CON ★
126.8 270.3
AUGUSTA RGNL CINC DEL
118.2

TAKEOFF MINIMUMS:

- Rwys 17, 35: Standard. ATC climb of 489 feet per NM to 6000.
- Rwy 8: Standard with minimum obstacle climb of 392 feet per NM to 2600. ATC climb of 489 feet per NM to 6000.
- Rwy 26: 300-1¼ or Standard with minimum obstacle climb of 323 feet per NM to 500. ATC climb of 489 feet per NM to 6000.

TAKEOFF OBSTACLE NOTES:

- Rwy 8: Numerous trees beginning 560 feet from DER, 67 feet left of centerline, up to 80 feet AGL/209 feet MSL. Numerous trees beginning 821 feet from DER, 124 feet right of centerline, up to 80 feet AGL/209 feet MSL.
- Rwy 17: Numerous trees beginning 746 feet from DER, 616 feet left of centerline, up to 72 feet AGL/203 feet MSL. Numerous trees beginning 1,700 feet from DER, 759 feet right of centerline, up to 82 feet AGL/216 feet MSL.
- Rwy 26: Numerous trees beginning 993 feet from DER, 295 feet left of centerline, up to 85 feet AGL/219 feet MSL. Light pole and numerous trees beginning 1,016 feet from DER, 286 feet right of centerline, up to 71 feet AGL/205 feet MSL. Tree 4,983 feet from DER, 1,396 feet left of centerline, 100 feet AGL/329 feet MSL. Tree 1.4 NM from DER, 169 feet right of centerline, 112 feet AGL/361 feet MSL.



- NOTE: RNAV 1.
- NOTE: RADAR Required.
- NOTE: DME/DME/IRU or GPS Required.
- NOTE: Do not exceed 230 KIAS until advised by ATC.
- NOTE: For Turbojet aircraft only.
- NOTE: For non-GPS equipped aircraft: CAE and IRQ DMEs must be operational.
- NOTE: For use during Masters Golf Tournament week only.

NOTE: Chart not to scale.

SE-4, 22 OCT 2009 to 19 NOV 2009

KAOLN THREE DEPARTURE (RNAV)