

JUNPR TWO DEPARTURE (RNAV)

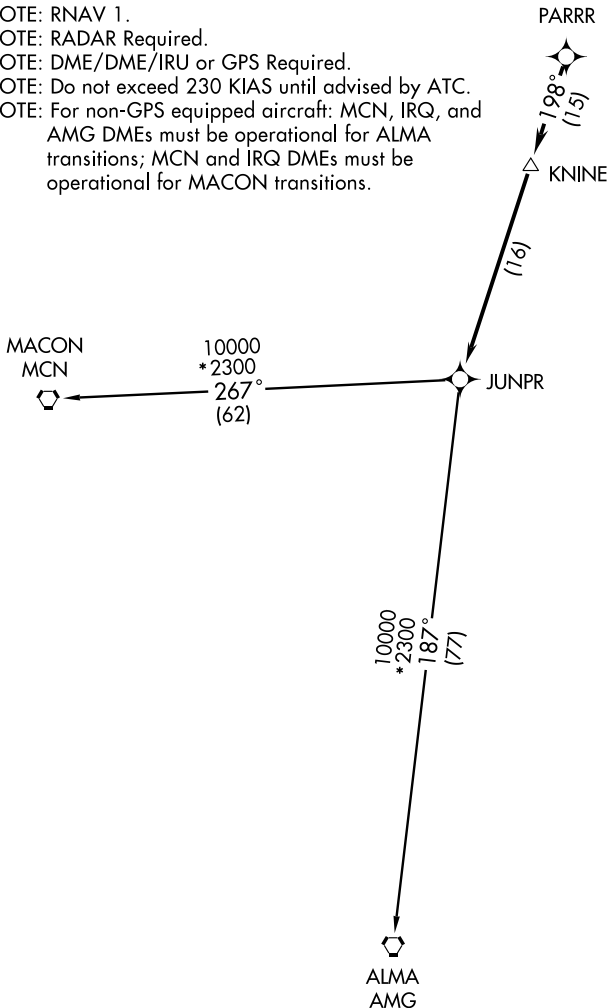
AUGUSTA TOWER ★
118.7 (CTAF) 239.3
AUGUSTA DEP CON ★
126.8 270.3
AUGUSTA RGNL CLNC DEL
118.2

TAKEOFF MINIMUMS:

Rwys 17, 35: STANDARD.
Rwy 8: STANDARD with minimum climb of
392 feet per NM to 2600.
Rwy 26: 300-1¾ or STANDARD with minimum
climb of 308 feet per NM to 500.



- NOTE: RNAV 1.
- NOTE: RADAR Required.
- NOTE: DME/DME/IRU or GPS Required.
- NOTE: Do not exceed 230 KIAS until advised by ATC.
- NOTE: For non-GPS equipped aircraft: MCN, IRQ, and AMG DMEs must be operational for ALMA transitions; MCN and IRQ DMEs must be operational for MACON transitions.



SE-4, 22 OCT 2009 to 19 NOV 2009

SE-4, 22 OCT 2009 to 19 NOV 2009

NOTE: Chart not to scale.

(NARRATIVE ON FOLLOWING PAGE)

JUNPR TWO DEPARTURE (RNAV)