

ASTORIA, OREGON

AL-24 (FAA)

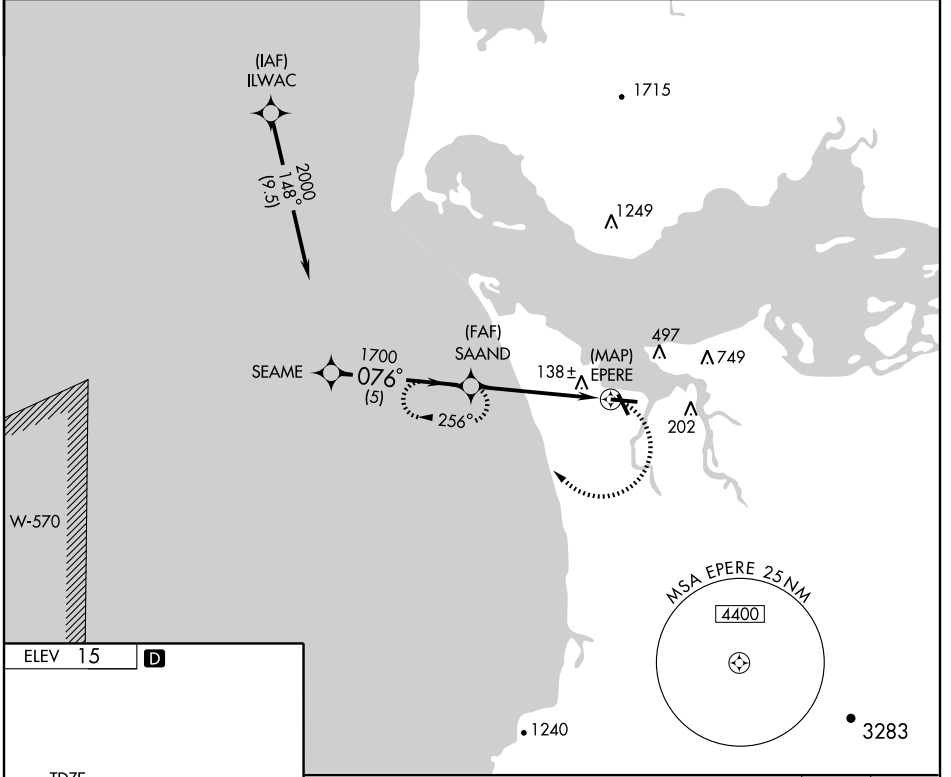
GPS RWY 8

ASTORIA RGNL (AST)

APP CRS	Rwy Idg	4896
076°	TDZE	14
	Apt Elev	15

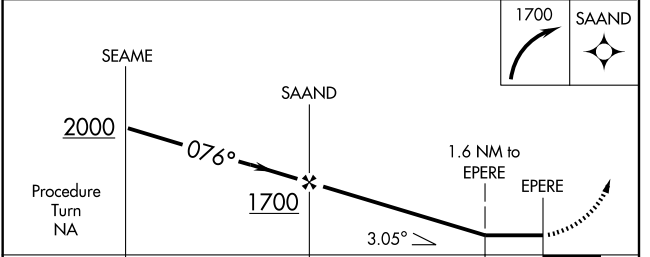
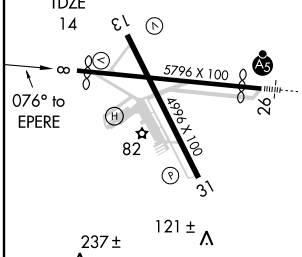
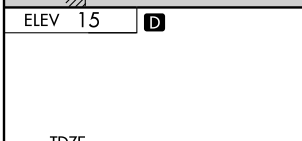
NA MISSED APPROACH: Climbing right turn to 1700 direct SAAND WP and hold.

ASOS 135.375	SEATTLE CENTER 124.2 317.6	MC MINNVILLE RADIO 122.3	UNICOM 122.8 (CTAF) 0
------------------------	--------------------------------------	------------------------------------	---------------------------------



NW-1, 22 OCT 2009 to 19 NOV 2009

NW-1, 22 OCT 2009 to 19 NOV 2009



CATEGORY	A	B	C	D
S-8	600-1	586 (600-1)	600-1½ 586(600-1½)	600-1¾ 586(600-1¾)
CIRCLING	660-1 645(700-1)	760-1¼ 745(800-1¼)	800-2¼ 785(800-2¼)	900-3 885(900-3)

ASTORIA, OREGON
Orig 09295

46°09'N-123°53'W

ASTORIA RGNL (AST) GPS RWY 8