

# COPTER LOC/DME 257°

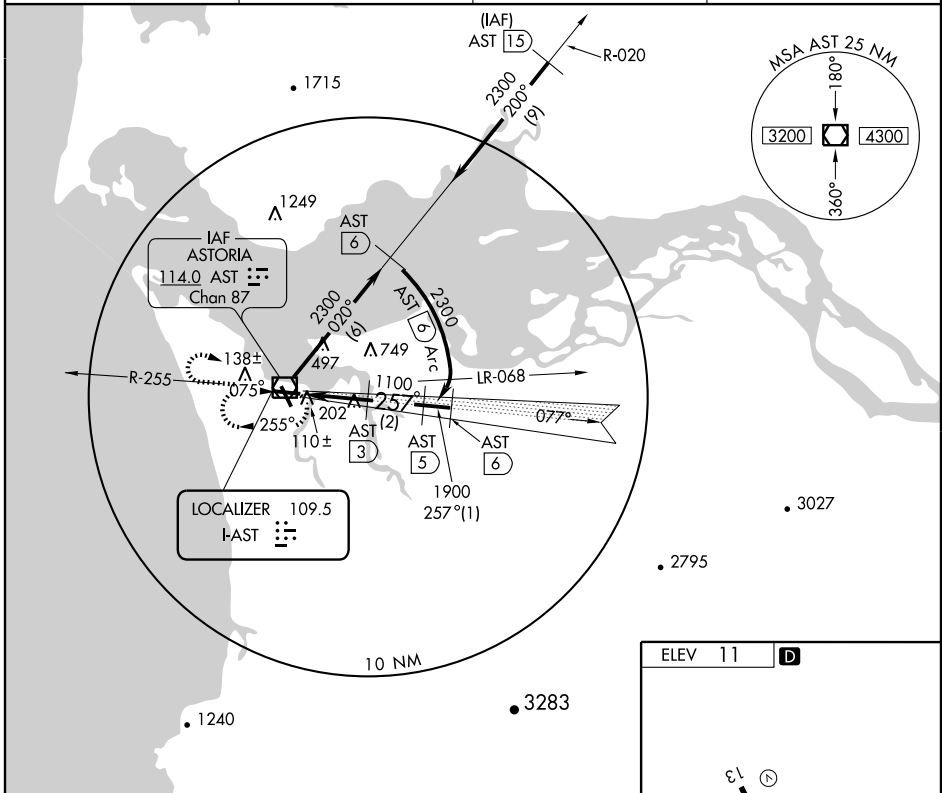
ASTORIA RGNL (AST)

LOC I-AST <b>109.5</b>	APP CRS <b>257°</b>	Rwy Idg TDZE Apt Elev	<b>N/A</b> <b>9</b> <b>11</b>
---------------------------	------------------------	-----------------------------	-------------------------------------

**NA** DME from AST VOR/DME. Simultaneous reception of I-AST and AST VOR/DME required. Increase visibility to ½ mile for inoperative MALSR.

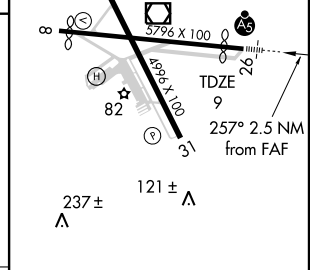
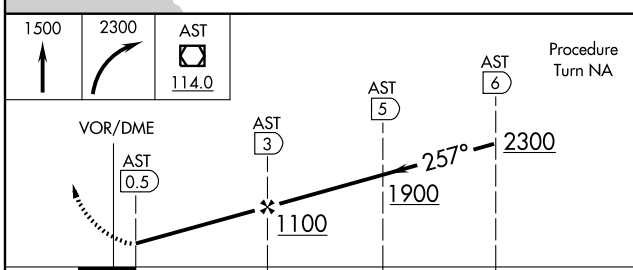
MISSED APPROACH: Climb to 1500 then climbing right turn to 2300 direct AST VOR/DME and hold.

ASOS <b>135.375</b>	SEATTLE CENTER <b>124.2 317.6</b>	MC MINNVILLE RADIO <b>122.3</b>	UNICOM <b>122.8 (CTAF)</b>
------------------------	--------------------------------------	------------------------------------	-------------------------------



NW-1, 22 OCT 2009 to 19 NOV 2009

NW-1, 22 OCT 2009 to 19 NOV 2009



CATEGORY	COPTER	B	C	D
H-257°	380-¼ 371 (400-¼)		NA	
CIRCLING NOT AUTHORIZED				

REIL Rwy 8  
REIL Rwy 13  
MIRL Rwys 8-26 and 13-31