

ARDMORE, OKLAHOMA

AL-22 (FAA)

ILS or LOC RWY 31

ARDMORE MUNI (ADM)

LOC I-AIW 108.9	APP CRS 309°	Rwy ldg 7220 TDZE 732 Apt Elev 762
---------------------------	------------------------	---

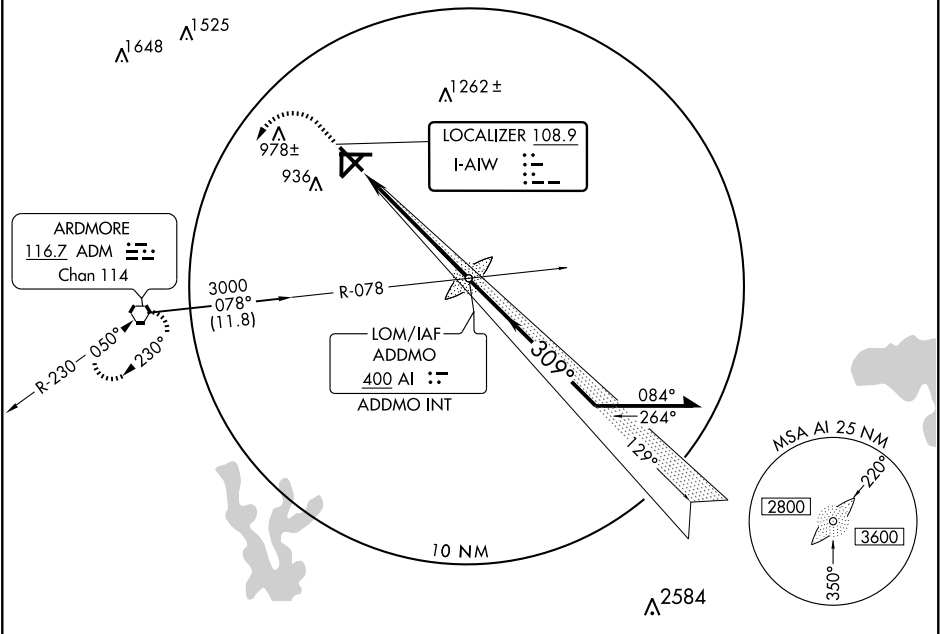
⚠ When control tower closed use Ardmore Downtown Executive altimeter setting.
⚠ For inoperative MALS/R increase S-LOC 31 visibility to 1 mile Cats A/B/C.
 Inoperative table does not apply to S-ILS.
 Autopilot coupled approach not authorized below 1360'.

MALS/R



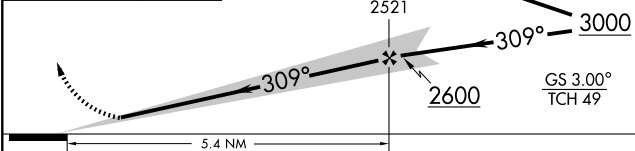
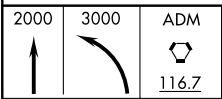
MISSED APPROACH: Climb to 2000 then climbing left turn to 3000 direct ADM VORTAC and hold.

ATIS 125.6	FORT WORTH CENTER 128.1 327.15	ARDMORE TOWER ★ 118.5 (CTAF) 257.7	GND CON 121.8	UNICOM 122.95
----------------------	--	--	-------------------------	-------------------------

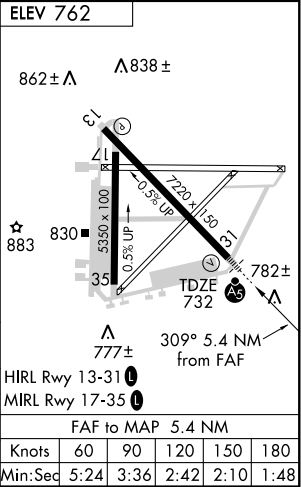


SC-1, 22 OCT 2009 to 19 NOV 2009

SC-1, 22 OCT 2009 to 19 NOV 2009



CATEGORY	A	B	C	D
S-ILS 31		932- ³ / ₄	200 (200- ³ / ₄)	
S-LOC 31		1080- ³ / ₄	348 (400- ³ / ₄)	
CIRCLING	1300-1 538 (600-1)	1380-1 618 (700-1)	1500-2 738 (800-2)	1540-2 ¹ / ₂ 778 (800-2 ¹ / ₂)
ARDMORE DOWNTOWN EXECUTIVE ALTIMETER SETTING MINIMUMS				
S-ILS 31		969- ³ / ₄	237 (300- ³ / ₄)	
S-LOC 31		1120- ³ / ₄	388 (400- ³ / ₄)	
CIRCLING	1340-1 578 (600-1)	1420-1 658 (700-1)	1540-2 ¹ / ₄ 778 (800-2 ¹ / ₄)	1580-2 ³ / ₄ 818 (900-2 ³ / ₄)



ARDMORE, OKLAHOMA
Amdt 4B 09239

34°18'N-97°01'W

ARDMORE MUNI (ADM)

ILS or LOC RWY 31