


RNAV (GPS) RWY 34

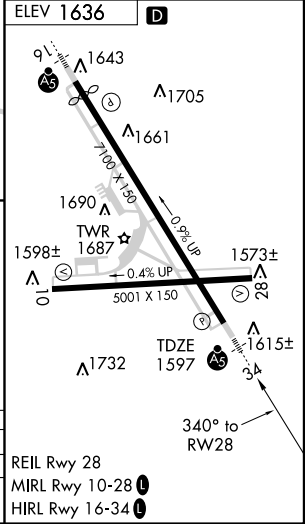
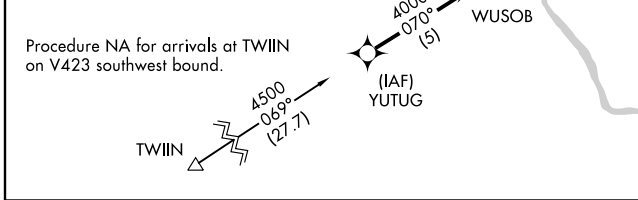
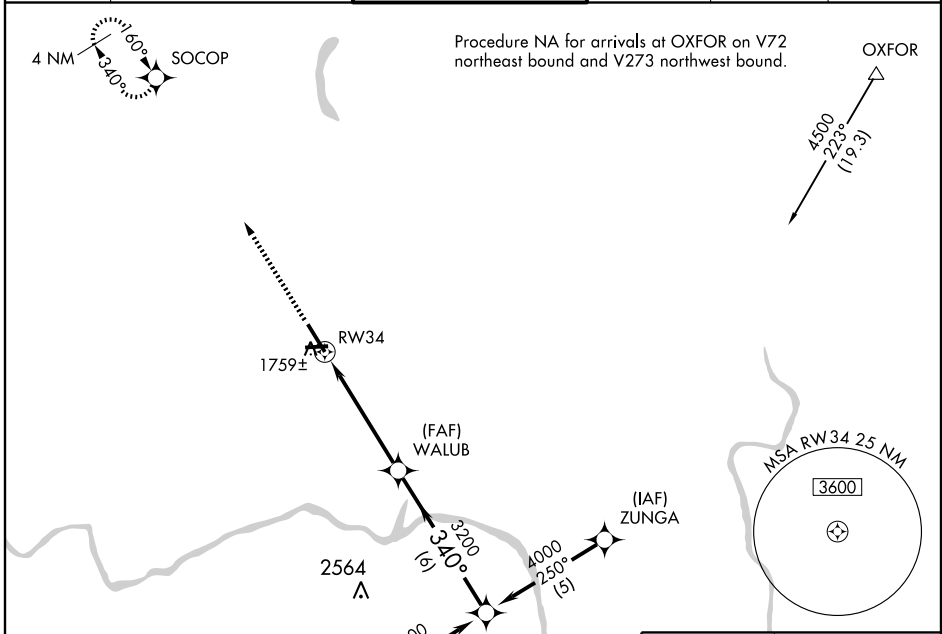
BINGHAMTON/GREATER BINGHAMTON/EDWIN A. LINK FIELD (BGM)



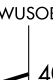
APP CRS	Rwy Idg	7100
340°	TDZE	1597
	Apt Elev	1636

▼ GPS or RNP-0.3 Required. DME/DME RNP-0.3 NA. When VGSI inop, straight-in/circling Rwy 34 procedure NA at night.
▲ NA Inoperative table does not apply to Cat. A/B. For inoperative MALSR, increase LNAV MDA Cat. C/D visibility to RVR 6000.

MALSR  MISSED APPROACH: Climb to 3900 direct SOCOB WP and hold.

ATIS	BINGHAMTON APP CON *	BINGHAMTON TOWER *	GND CON	CLNC DEL	UNICOM
128.15	118.6 257.625	119.3 (CTAF) 0 239.25	121.9	125.05	122.95



3900	SOCOP	WUSOB
		
RW34		WALUB
3200		4000
5 NM		6 NM
Procedure Turn NA		

CATEGORY	A	B	C	D
LNAV MDA	2020/50			
	423 (400-1)			
CIRCLING	2100-1	464 (500-1)	2100-1½ 464 (500-1½)	2200-2 564 (600-2)

RNAV (GPS) RWY 34

NE-2, 22 OCT 2009 to 19 NOV 2009

NE-2, 22 OCT 2009 to 19 NOV 2009