

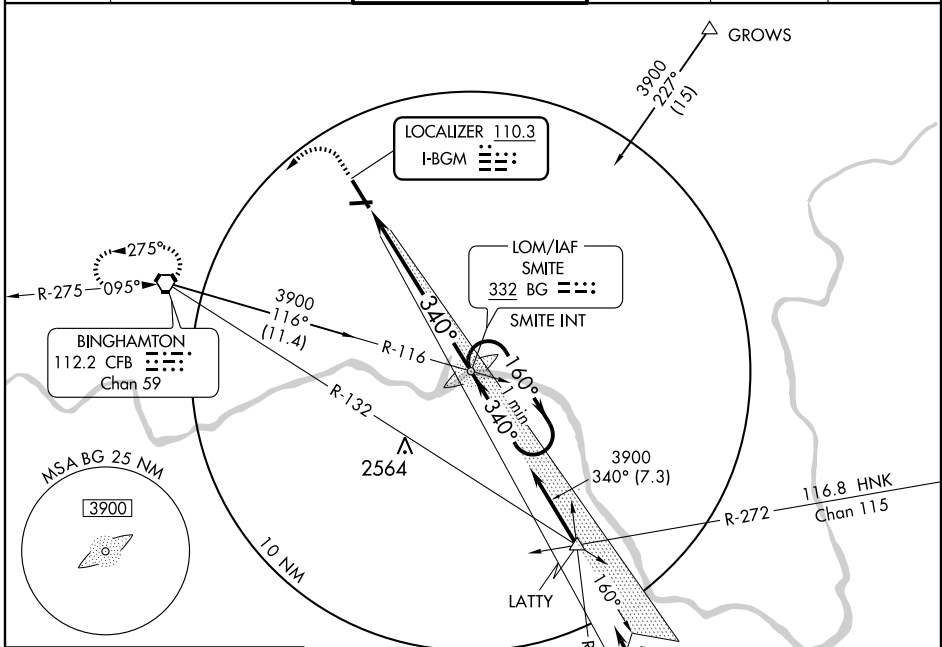
ILS RWY 34

LOC I-BGM 110.3	APP CRS 340°	Rwy Idg TDZE Apt Elev	7100 1597 1636
---------------------------	------------------------	-----------------------------	---

BINGHAMTON/
GREATER BINGHAMTON/EDWIN A. LINK FIELD (BGM)

		MISSED APPROACH: Climb to 2200, then climbing left turn to 3900 direct CFB VORTAC and hold.
--	--	---

ATIS 128.15	BINGHAMTON APP CON * 118.6 257.625	BINGHAMTON TOWER * 119.3 (CTAF) 0 239.25	GND CON 121.9	CLNC DEL 125.05	UNICOM 122.95
-----------------------	--	--	-------------------------	---------------------------	-------------------------



NE-2, 22 OCT 2009 to 19 NOV 2009

NE-2, 22 OCT 2009 to 19 NOV 2009

ELEV 1636	D
-----------	----------

Profile view showing:

- TDZE 1597**
- 1643**, **A1705**, **A1661**, **1690**, **1598±**, **1573±**, **A1732**, **A1615±**
- 0.3% UP**, **0.4% UP**
- 5001 X 150**
- REIL Rwy 28**, **MIRL Rwy 10-28** (340° 6.9 NM from FAF), **HIRL Rwy 16-34** (from FAF)
- FAF to MAP 6.9 NM**

Knots	60	90	120	150	180
Min:Sec	6:54	4:36	3:27	2:46	2:18

2200	3900	CFB	112.2
------	------	-----	-------

Diagram showing:

- SMITE LOM/INT** (Morse code: 3-3-2)
- One Minute Holding Pattern**
- 3853**, **160°**, **3900**, **340°**, **3900**
- GS 3.00° TCH 44**
- 6.9 NM**

CATEGORY	A	B	C	D
S-ILS 34		1797/24	200 (200-1/2)	
S-LOC 34		1960/24	363 (400-1/2)	1960/40 363 (400-3/4)
CIRCLING	2100-1	464 (500-1)	2100-1 1/2 464 (500-1 1/2)	2200-2 564 (600-2)

ILS RWY 34