

AMARILLO, TEXAS

AL-19 (FAA)

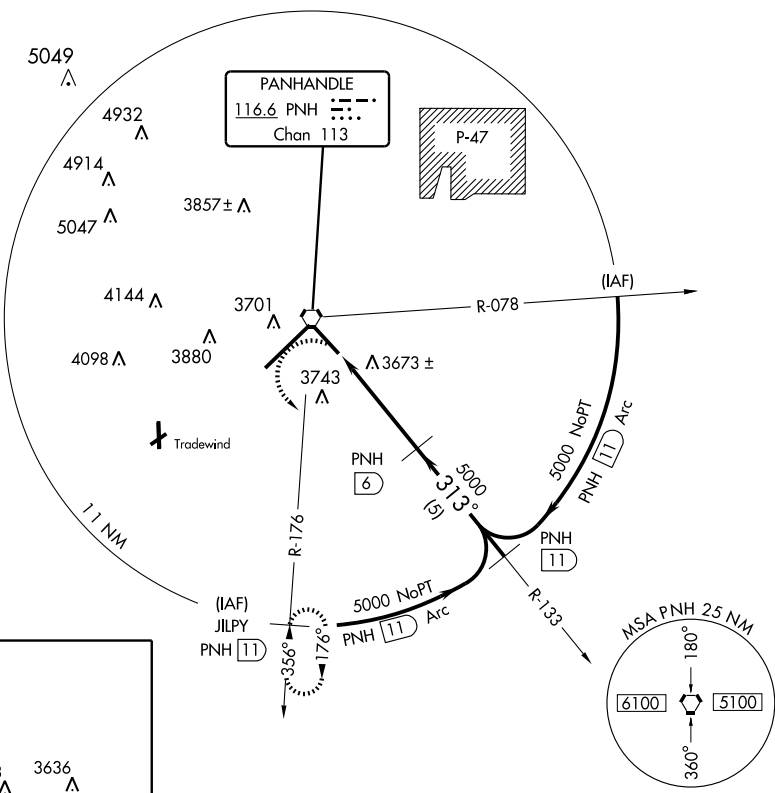
VOR/DME RWY 31

AMARILLO/RICK HUSBAND AMARILLO INTL (A.M.A)

VORTAC PNH 116.6 Chan 113	APP CRS 313°	Rwy Idg TDZE Apt Elev	7901 3598 3605
---	------------------------	-----------------------------	---

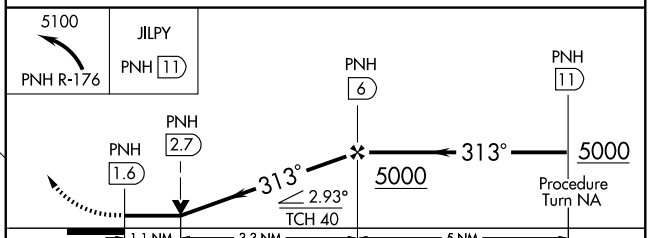
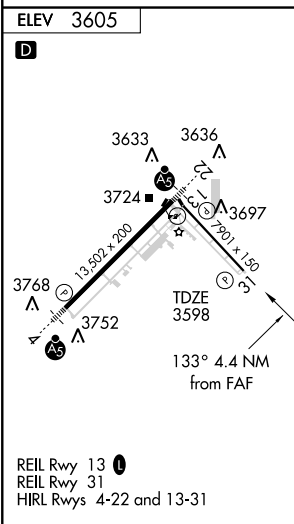
		MISSED APPROACH: Climbing left turn to 5100 via PNH-176 to JILPY/11 DME and hold.		
--	--	---	--	--

ATIS 118.85 350.3	AMARILLO APP CON * 119.5 307.0	AMARILLO TOWER* 118.3 (CTAF) 257.9	GND CON 121.9 348.6	CLNC DEL 121.65
-----------------------------	--	---	-------------------------------	---------------------------



SC-2, 22 OCT 2009 to 19 NOV 2009

SC-2, 22 OCT 2009 to 19 NOV 2009



CATEGORY	A	B	C	D	E
S-31	3960-1 362 (400-1)		3960-1¼ 362 (400-1¼)		
CIRCLING	4080-1	475 (500-1)	4080-1½ 475 (500-1½)	4240-2 635 (700-2)	4460-3 855 (900-3)

AMARILLO, TEXAS
Orig-A 09071

AMARILLO/RICK HUSBAND AMARILLO INTL (A.M.A)
35°13'N-101°42'W

VOR/DME RWY 31