


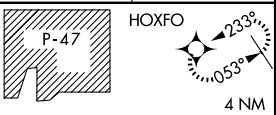
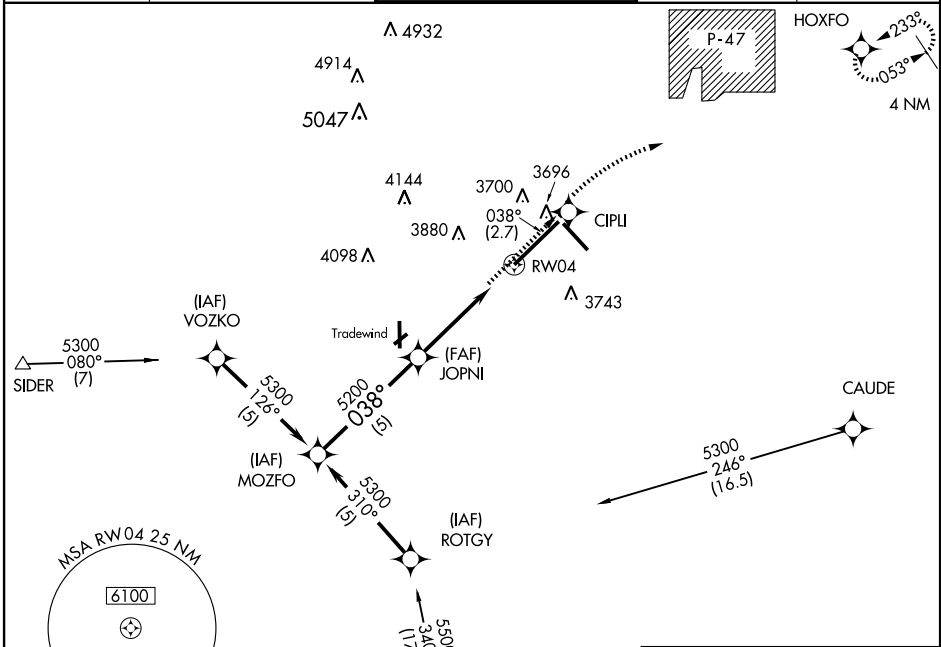
# RNAV (GPS) RWY 4

AMARILLO/RICK HUSBAND AMARILLO INTL (AMA)

APP CRS <b>038°</b>	Rwy Idg <b>13,502</b>
	TDZE <b>3607</b>
	Apt Elev <b>3607</b>

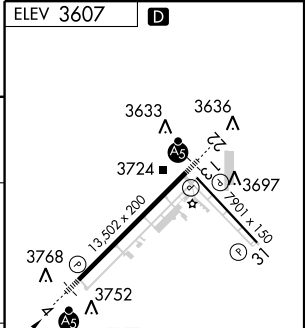
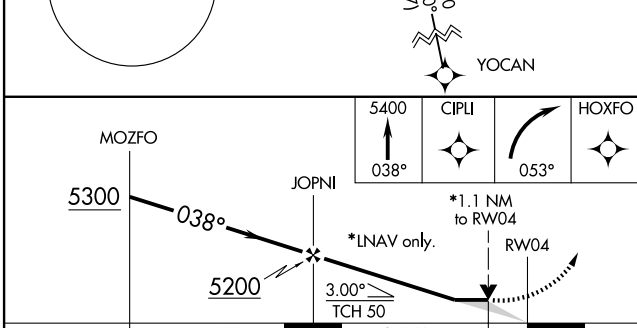
<p><b>▽</b> GPS or RNP-0.3 REQUIRED. DME/DME RNP-0.3 NA.</p> <p><b>▲ NA</b> Baro-VNAV NA below -22°C (-7°F). For inoperative MALSRS increase LNAV Cat D visibility to 6000 RVR.</p> <p><b>ASR</b></p>	<p><b>MALSRS</b></p> 	<p><b>MISSED APPROACH:</b> Climb to 5400 via course 038° to CIPLI then right turn via course 053° to HOXFO and hold.</p>
---	--	--

<p>ATIS <b>118.85 350.3</b></p>	<p>AMARILLO APP CON * <b>119.5 307.0</b></p>	<p>AMARILLO TOWER * <b>118.3</b> (CTAF) <b>257.9</b></p>	<p>GND CON <b>121.9 348.6</b></p>	<p>CLNC DEL <b>121.65</b></p>
-------------------------------------	--	--	---------------------------------------	-----------------------------------



SC-2, 22 OCT 2009 to 19 NOV 2009

SC-2, 22 OCT 2009 to 19 NOV 2009



CATEGORY	A	B	C	D	E
GLS PA DA	NA				
LNAV/VNAV DA	4020/50		413 (500-1)		
LNAV MDA	4020/24	413 (500-1/2)	4020/40 413 (500-3/4)	4020/50	413 (500-1)
CIRCLING	4080-1 1/2		473 (500-1 1/2)		4240-2 633 (700-2)    4460-3 853 (900-3)

ELEV 3607 **D**

3633 3636  
3724 3697  
3768 3752  
TDZE 3607

038° to RWY04

HIRL Rwy 4-22 and 13-31  
REIL Rwy 13 **0**  
REIL Rwy 31