

LDA/DME RWY 22

AMARILLO/ RICK HUSBAND AMARILLO INTL (AMA)

LOC I-RQ 111.1 Chan 48	APP CRS 214°	Rwy Idg 13502 TDZE 3603 Apt Elev 3605
--	------------------------	--

Final approach course offset 4.45 degrees intersects the runway centerline 2509' from Rwy 22. For inoperative MALS, increase S-LDA 22 Cat D and E visibilities to 1, S-LDA/GS22 to ¾ all Cats.

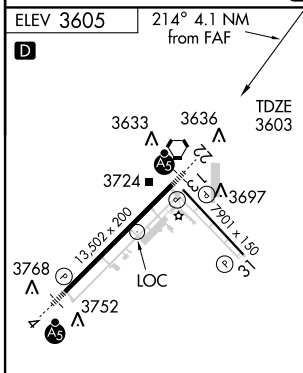
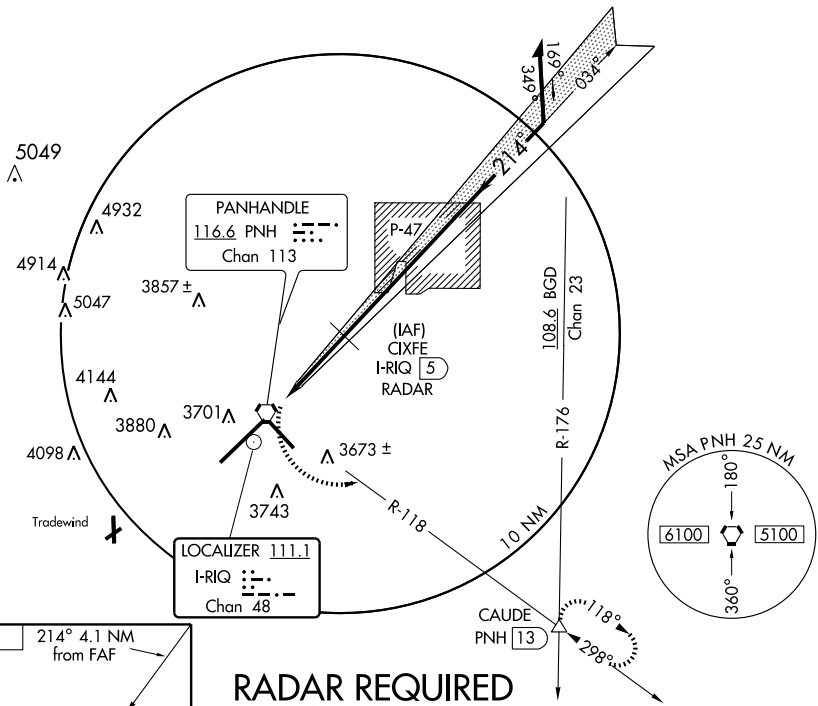
MALS

MISSED APPROACH: Climbing left turn to 5000 via PNH VORTAC R-118 to CAUDE Int and hold.

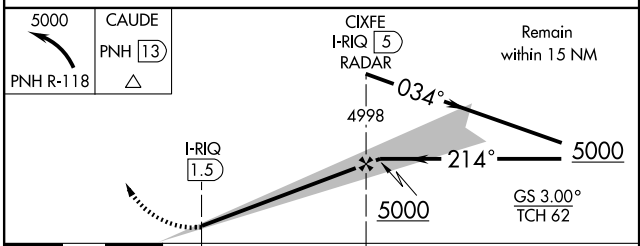
ATIS 118.85 350.3	AMARILLO APP CON * 119.5 307.0	AMARILLO TOWER * 118.3 (CTAF) 257.9	GND CON 121.9 348.6	CLNC DEL 121.65
-----------------------------	--	--	-------------------------------	---------------------------

SC-2, 22 OCT 2009 to 19 NOV 2009

SC-2, 22 OCT 2009 to 19 NOV 2009



RADAR REQUIRED LDA/GLIDE SLOPE



CATEGORY	A	B	C	D	E
LDA/GS-22	3853-½ 250 (300-½)				
LDA-22	3900-½ 297 (300-½)		3900-¾ 297 (300-¾)		
CIRCLING	4080-1 475 (500-1)		4080-1½ 475 (500-1½)	4240-2 635 (700-2)	4460-3 855 (900-3)

REIL Rwy 13
REIL Rwy 31
HIRL Rwy 4-22 and 13-31