

AMARILLO, TEXAS

# HI-VOR/DME or TACAN RWY 4

VOR/DME PNH <b>116.6</b> Chan <b>113</b>	APCH CRS <b>037°</b>	Rwy Idg <b>13,502</b> TDZE <b>3607</b> Arpt Elev <b>3607</b>
--	-------------------------	--

JAL-19 [USAF]

RICK HUSBAND AMARILLO INTL (KAMA)

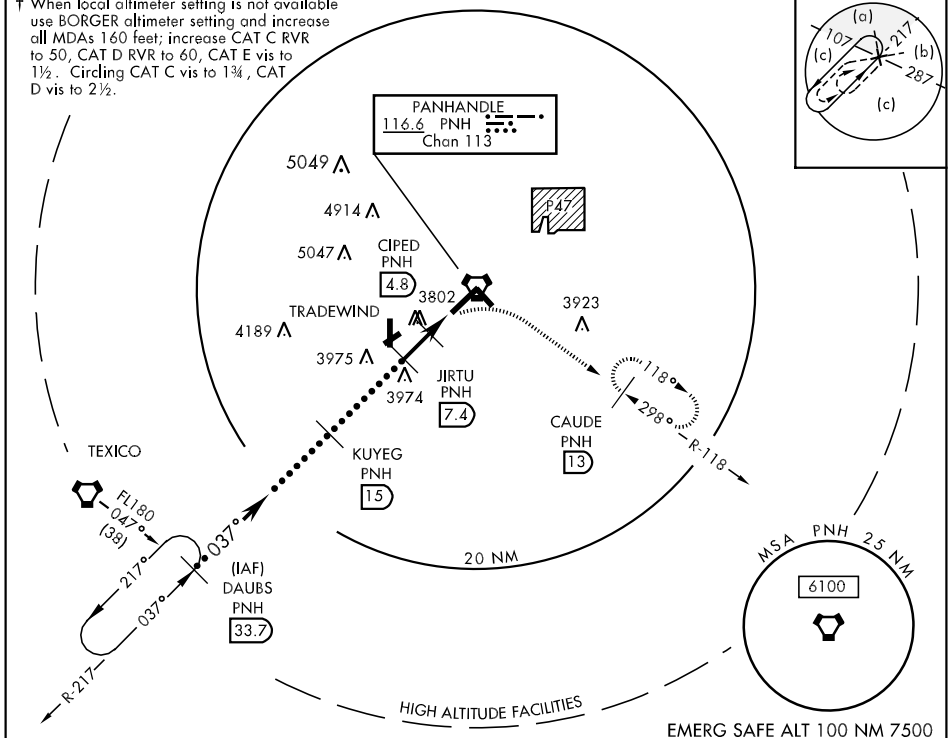
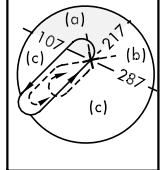
▼ \* For inop ALS, increase CAT D vis to 1¼ miles, CAT E vis to 1½ miles.



MISSED APPROACH: Climbing right turn to 5000 via heading 090° and PNH VORTAC R-118 to CAUDE INT/PNH 13 DME and hold.

ATIS <b>118.85 350.3</b>	AMARILLO APP CON <b>119.5 307.0</b> (161° - 339°) <b>124.8 319.15</b> (340° - 160°)	AMARILLO TOWER * <b>118.3 0 257.9</b>	GND CON <b>121.9 348.6</b>	CLNC DEL <b>121.65</b>	ASR
-----------------------------	---	--	-------------------------------	---------------------------	-----

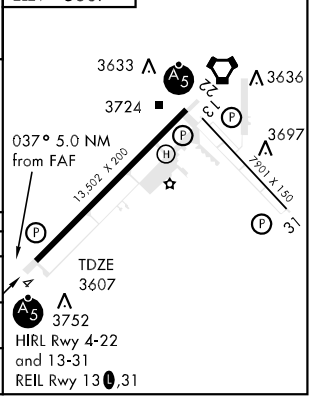
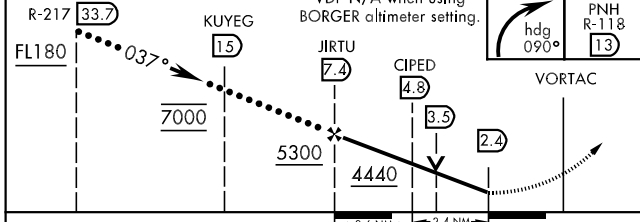
† When local altimeter setting is not available use BORGER altimeter setting and increase all MDAs 160 feet; increase CAT C RVR to 50, CAT D RVR to 60, CAT E vis to 1½. Circling CAT C vis to 1¾, CAT D vis to 2½.



SC-2, 22 OCT 2009 to 19 NOV 2009

SC-2, 22 OCT 2009 to 19 NOV 2009

EMERG SAFE ALT 100 NM 7500



CATEGORY	C	D	E
S-4 * †	4020/40 413 (500-¾)	4020/50 413 (500-1)	
CIRCLING †	4080-1½ 473 (500-1½)	4240-2 633 (700-2)	4460-3 853 (900-3)
S-ASR-4	4160/50 555 (600-1)	4160/60 555 (600-1¼)	4160-1½ 555 (600-1½)

AMARILLO, TEXAS  
Amdt 1 08241

35°13'N-101°42'W

RICK HUSBAND AMARILLO INTL (KAMA)

# HI-VOR/DME or TACAN RWY 4