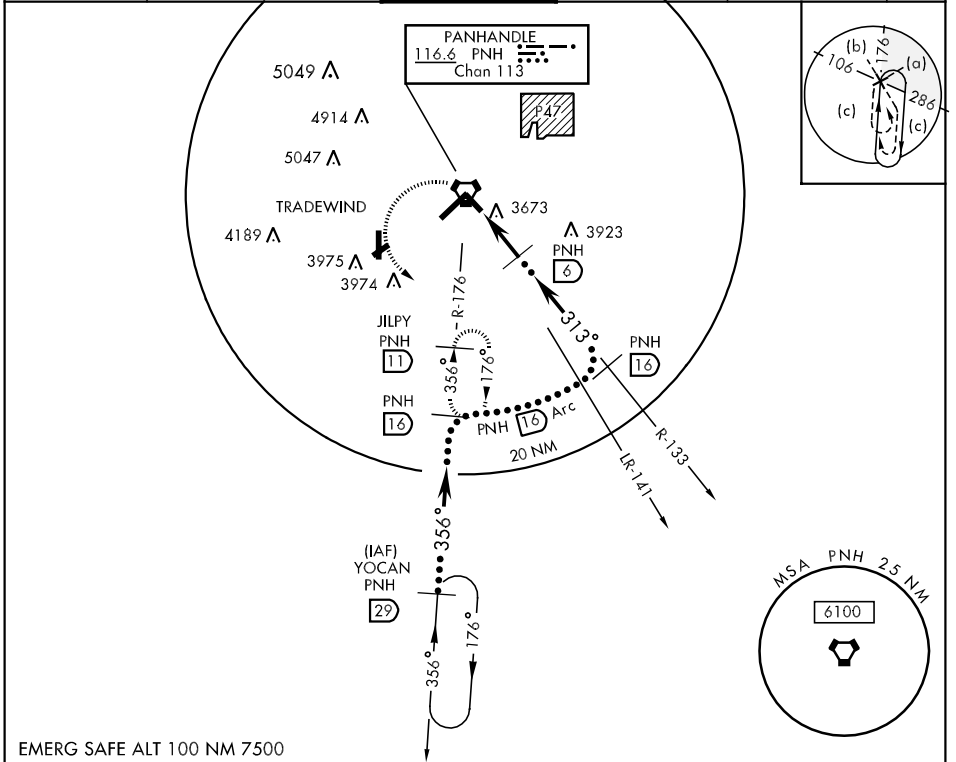


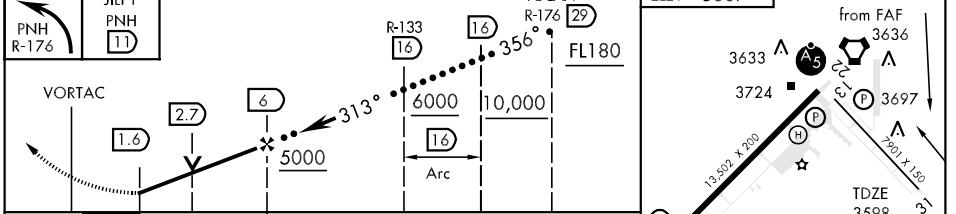
VOR/DME PNH 116.6 Chan 113	APCH CRS 313°	Rwy Idg TDZE Arpt Elev 7901 3598 3607	JAL-19 [USAF]	RICK HUSBAND AMARILLO INTL (KAMA)
--	-------------------------	---	---------------	-----------------------------------

▼ MISSED APPROACH: Climbing left turn to 5100 via PNH R-176 to JILPY/PNH 11 DME and hold.

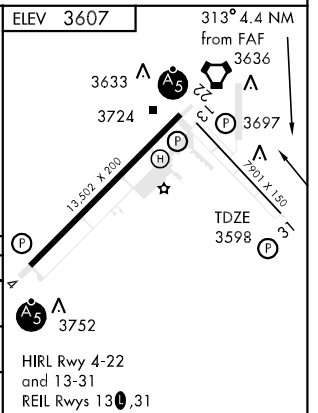
ATIS 118.85 350.3	AMARILLO APP CON 119.5 307.0 (161° - 339°) 124.8 319.15 (340° - 160°)	AMARILLO TOWER ★ 118.3 0 257.9	GND CON 121.9 348.6	CLNC DEL 121.65	ASR
-----------------------------	---	--	-------------------------------	---------------------------	-----



EMERG SAFE ALT 100 NM 7500



CATEGORY	C	D	E
S-31	3960-1 362 (400-1)	3960-1¼ 362 (400-1¼)	4460-3 855 (900-3)
CIRCLING	4080-1½ 475 (500-1½)	4240-2 635 (700-2)	NA
S-ASR-31	3960-1 362 (400-1)	3960-1¼ 362 (400-1¼)	NA



SC-2, 22 OCT 2009 to 19 NOV 2009

SC-2, 22 OCT 2009 to 19 NOV 2009