

AMARILLO, TEXAS

# HI-VOR/DME or TACAN RWY 22

VOR/DME PNH **116.6**  
Chan **113**

APCH CRS **235°**

Rwy Idg **13,502**  
TDZE **3603**  
Arpt Elev **3607**

JAL-19 [USAF]

RICK HUSBAND AMARILLO INTL (KAMA)

**M** MISSED APPROACH: Climbing left turn to 5000 via PNH R-118 to CAUDE INT/PNH 13 DME and hold.

ATIS **118.85 350.3**

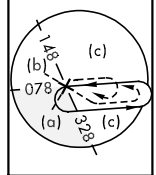
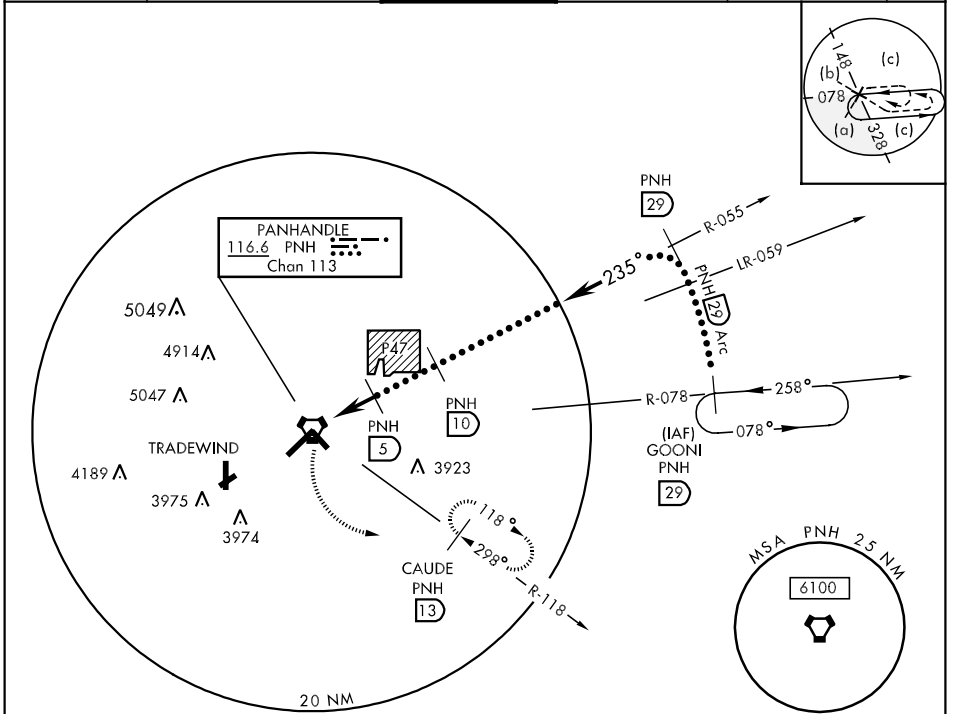
AMARILLO APP CON **119.5 307.0** (161° - 339°)  
**124.8 319.15**(340° - 160°)

AMARILLO TOWER ★ **118.3 0 257.9**

GND CON **121.9 348.6**

CLNC DEL **121.65**

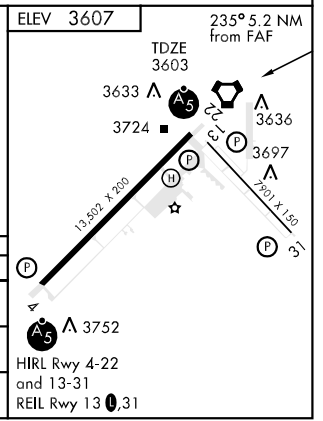
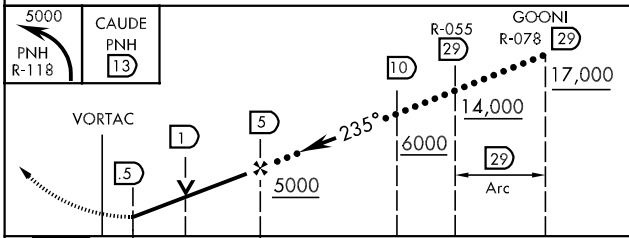
ASR



SC-2, 22 OCT 2009 to 19 NOV 2009

SC-2, 22 OCT 2009 to 19 NOV 2009

EMERG SAFE ALT 100 NM 7500



CATEGORY	C	D	E
S-22	3960-1/2 357 (400-1/2)	3960-1 357 (400-1)	
CIRCLING	4080-1 1/2 475 (500-1 1/2)	4240-2 635 (700-2)	4460-3 855 (900-3)
S-ASR-22	3960-3/4 357 (400-3/4)	3960-1 1/4 357 (400-1 1/4)	

AMARILLO, TEXAS  
Orig 06271

35°13'N-101°42'W

RICK HUSBAND AMARILLO INTL (KAMA)

# HI-VOR/DME or TACAN RWY 22