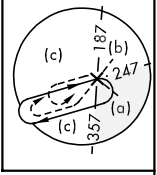
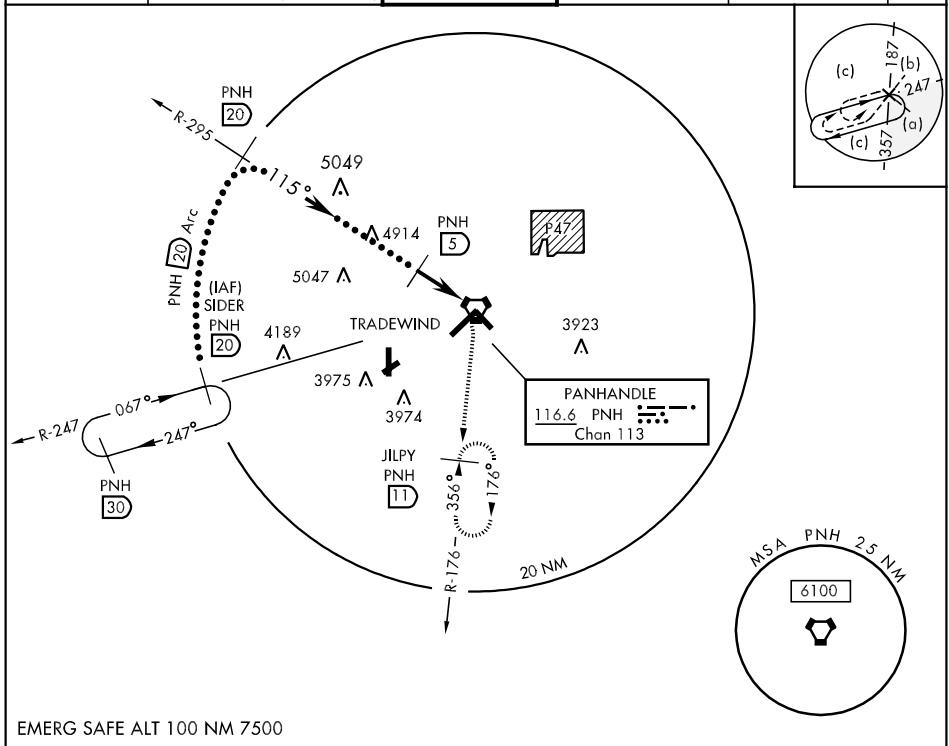


VOR/DME PNH 116.6 Chan 113	APCH CRS 115°	Rwy Idg TDZE 3600 Arpt Elev 3607	JAL-19 [USAF]	RICK HUSBAND AMARILLO INTL (KAMA)
--	-------------------------	--	---------------	-----------------------------------

▽ MISSED APPROACH: Climbing right turn to 5100 via PNH R-176 to JILPY/11 DME and hold.

ATIS 118.85 350.3	AMARILLO APP CON 119.5 307.0 (161° - 339°) 124.8 319.15 (340° - 160°)	AMARILLO TOWER ★ 118.3 0 257.9	GND CON 121.9 348.6	CLNC DEL 121.65	ASR
-----------------------------	---	--	-------------------------------	---------------------------	-----



SC-2, 22 OCT 2009 to 19 NOV 2009

SC-2, 22 OCT 2009 to 19 NOV 2009

SIDER R-247 20 FL180 10,000 Arc 20 R-295 20 115° 5500 VORTAC 4.6 NM 0.7		5100 PNH R-176 JILPY PNH 11	ELEV 3607 TDZE 3600 115° 5.3 NM from FAF 3633 A 3724 3636 A 3697 A 3752 A 13.592 X 2000 2001 X 150 HIRL Rwy 4-22 and 13-31 REIL Rwy 13 0,31
CATEGORY	C	D	E
S-13	3980-1 380 (400-1)	3980-1 1/4 380 (400-1 1/4)	4460-3 855 (900-3)
CIRCLING	4080-1 1/2 475 (500-1 1/2)	4240-2 635 (700-2)	NA
S-ASR-13	3980-1 380 (400-1)	3980-1 1/4 380 (400-1 1/4)	NA