

# VOR or GPS-A

VORTAC ALS <b>113.9</b> Chan <b>86</b>	APP CRS <b>322°</b>	Rwy Idg TDZE Apt Elev <b>7539</b>	N/A N/A <b>7539</b>
--	------------------------	--	---------------------------

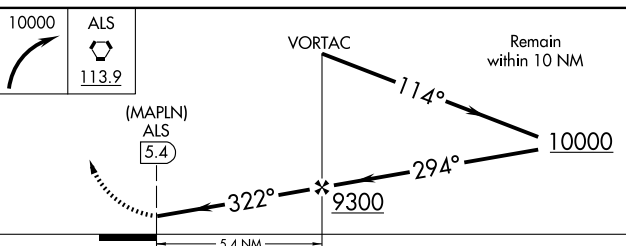
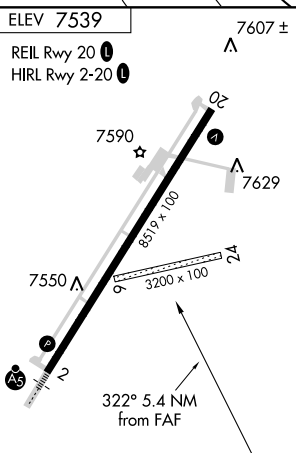
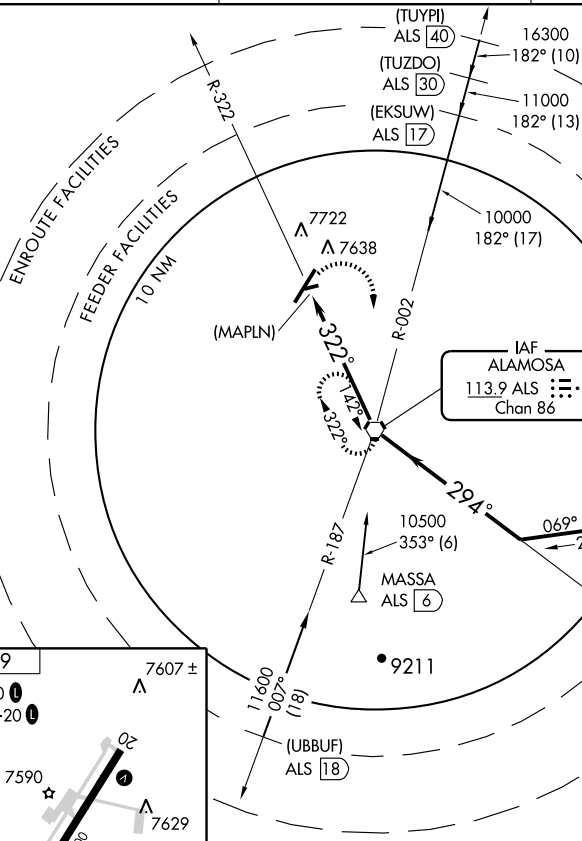
ALAMOSA/SAN LUIS VALLEY RGNL/BERGMAN FIELD (ALS)

MISSED APPROACH: Climbing right turn to 10000 direct ALS VORTAC and hold.

ASOS  
**135.175**

DENVER CENTER  
**128.375 379.95**

UNICOM  
**122.8 (CTAF)**



FAF to MAP 5.4 NM					
Knots	60	90	120	150	180
Min:Sec	5:24	3:36	2:42	2:10	1:48

CATEGORY	A	B	C	D
CIRCLING	8020-1	485 (500-1)	8020-1½ 485 (500-1½)	8100-2 565 (600-2)

# VOR or GPS-A

SW-1, 22 OCT 2009 to 19 NOV 2009

SW-1, 22 OCT 2009 to 19 NOV 2009