

ALAMOSA, COLORADO

AL-18 (FAA)

VORTAC ALS <b>113.9</b> Chan <b>86</b>	APP CRS <b>142°</b>	Rwy Idg TDZE Apt Elev	<b>N/A</b> <b>N/A</b> <b>7539</b>
--	------------------------	-----------------------------	---

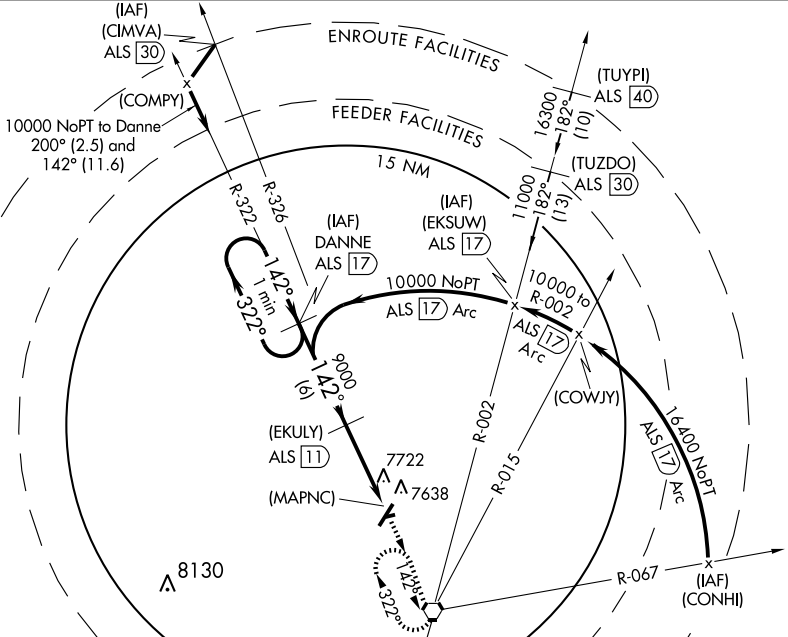
VOR/DME or GPS-B  
ALAMOSA/SAN LUIS VALLEY RGNL/BERGMAN FIELD (ALS)

MISSED APPROACH: Climb to 10000 direct ALS VORTAC and hold.

ASOS  
**135.175**

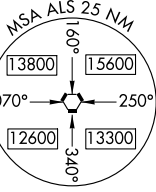
DENVER CENTER  
**128.375 379.95**

UNICOM  
**122.8 (CTAF)**

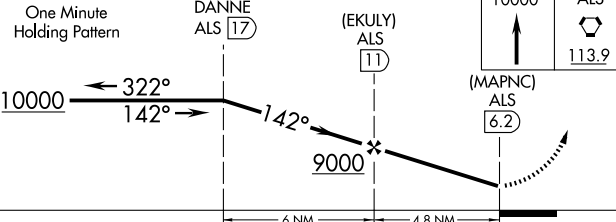
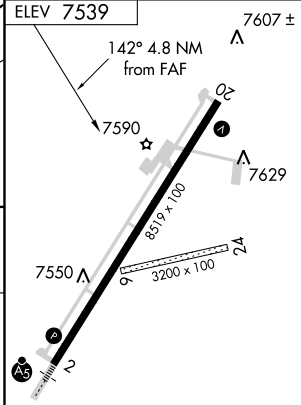


SW-1, 22 OCT 2009 to 19 NOV 2009

SW-1, 22 OCT 2009 to 19 NOV 2009



ALAMOSA  
113.9 ALS  
Chan 86



CATEGORY	A	B	C	D
CIRCLING	8020-1	485 (500-1)	8020-1½ 485 (500-1½)	8100-2 565 (600-2)

REIL Rwy 20  
HIRL Rwy 2-20

ALAMOSA, COLORADO  
Amdt 4A 09155

ALAMOSA/SAN LUIS VALLEY RGNL/BERGMAN FIELD (ALS)  
37°26'N-105°52'W

VOR/DME or GPS-B